



ICN Victoria, George Weston Foods, Mauri and BESIX Watpac's Industry Briefing

George Weston Foods New Ballarat Mauri Flour Mill Industry Briefing

27.07.2023 - Ballarat



Welcome

Noel Morton

Industry Adviser

ICN Victoria

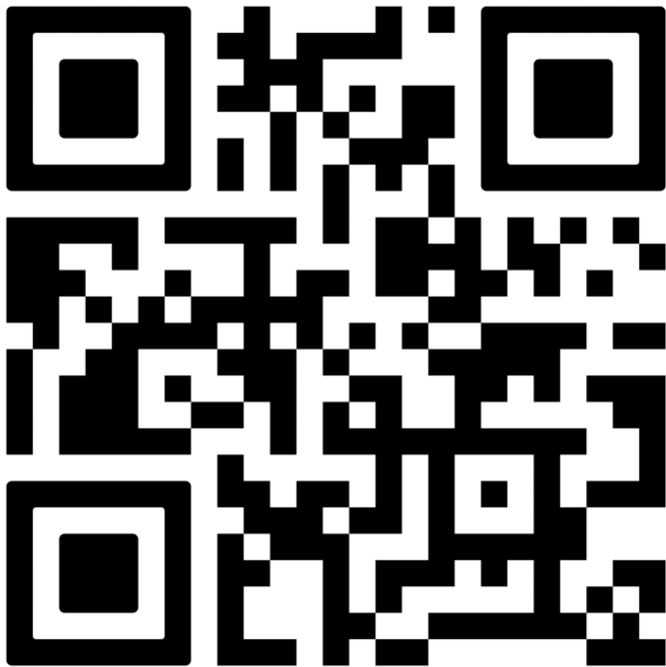
Acknowledgement of Country

ICN Victoria acknowledges the Traditional Custodians of the land we are meeting on today, the Wadawurrung and Dja Dja Wurrung People and pay respects to their Elders past, present and emerging and extend that respect to all Aboriginal and Torres Strait Islander People

Today's Program

- Welcome and Introduction
- Introduction to George Weston Foods, Mauri & Project Bluebird
- Construction details & procurement opportunities
- ICN Victoria - Gateway Overview
- Q & A
- Networking

Event Page





Steve Kennedy

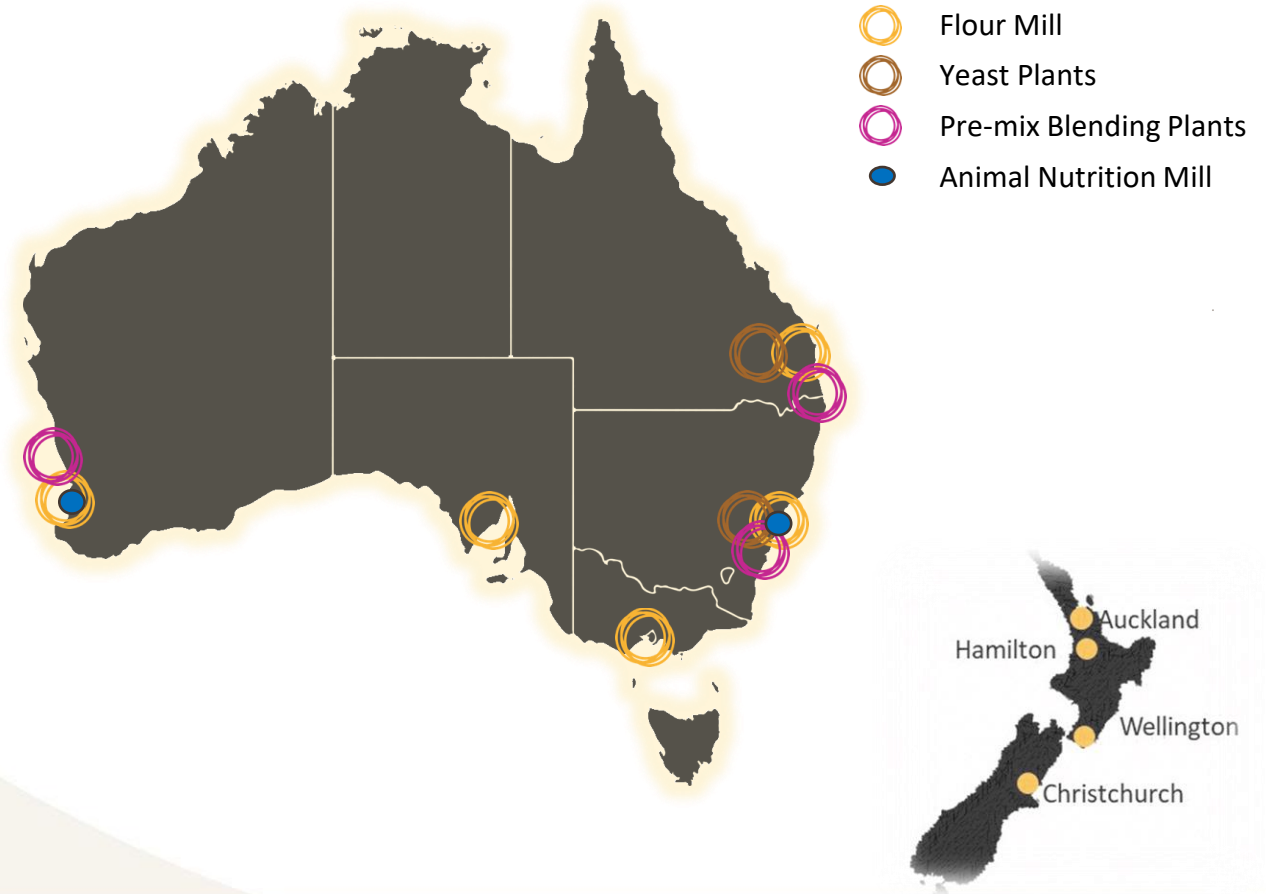
Capital Investment Director

Mauri



MAURI – Manufacturing Footprint

- Manufacturing footprint across Australia & NZ
- Flour milling & pre-mix/blending
- Yeast production
- Animal Nutrition



Mauri is a part of George Weston Foods

- Sales \$2.2bn, 6000 employees, 40 sites across Australia & NZ

MAURI ANZ



TIP TOP



DON



JASOL



YUMIs



GWF is a part of Associated British Foods Plc

- A diversified international food, ingredients and retail group
- Sales £17bn, 130,000 employees operating in 52 countries



Retail

PRIMARK®

Agriculture

PREMIER NUTRITION abagriChina ABVista

Ingredients

AB | MAURI ABFI AB Enzymes

Sugar

ABSugar BritishSugar ILLOVO SUGAR AFRICA silver spoon vivergo fuels An AB Sugar company

Grocery

TWININGS OF LONDON JORDANS RYVITA PATAK'S Original ovoltine Mazola KINGSMILL

MAURI™

Project Background

- Current VIC flour mill is in North Meb
- Existing site has operated 100+ years
- Ardent St district developments
- New Train Station adding pedestrians
- 2019 work began on options



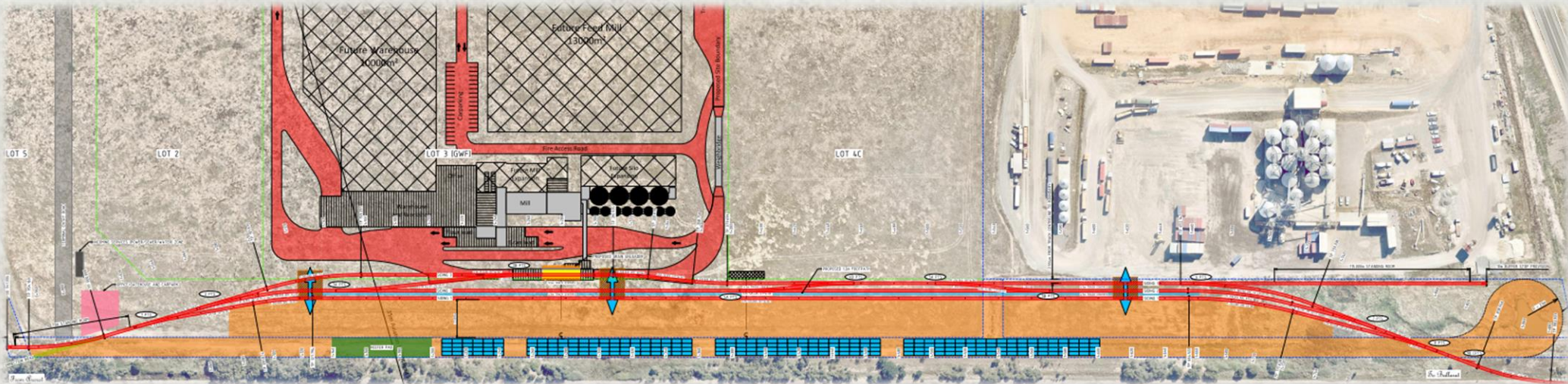






Ballarat selected for new site

- Project has been active since 2019
- Considered multiple sites across Victoria, BWEZ selected
- Planned rail intermodal – critical for grain supply
- Almost 8-hectare site – future development in mind
- DA approved & Sub-division works complete
- Land settlement complete



Project Design Philosophy

Safety & Quality

- Elimination of risk by design
- Initial and future use of site

Sustainability & Longevity

- Configuration
- Construction

Cost competitiveness for long-term

- Energy & Labour
- Freight - Rail

Digitisation & Control

- Automation
- Digitised task management



Collaborative Partnership Approach



Process Equip partner - Buhler

- Buhler – Global world leader (Swiss based)
- Latest milling technology
- Innovative design - now complete



Construction design partner – BESIX Watpac

- Process & building integration critical in a flour mill
- A 3-stage design process – now in detailed design
- Utilise local resources/suppliers where possible



Project Timing - High Level

2023

- Complete Design
- Contracts signed

2024

- Equipment build
- Construction

2025

- Complete construction
- Installation
- Operational readiness

2026

- Commission & Ramp up
- Close existing site







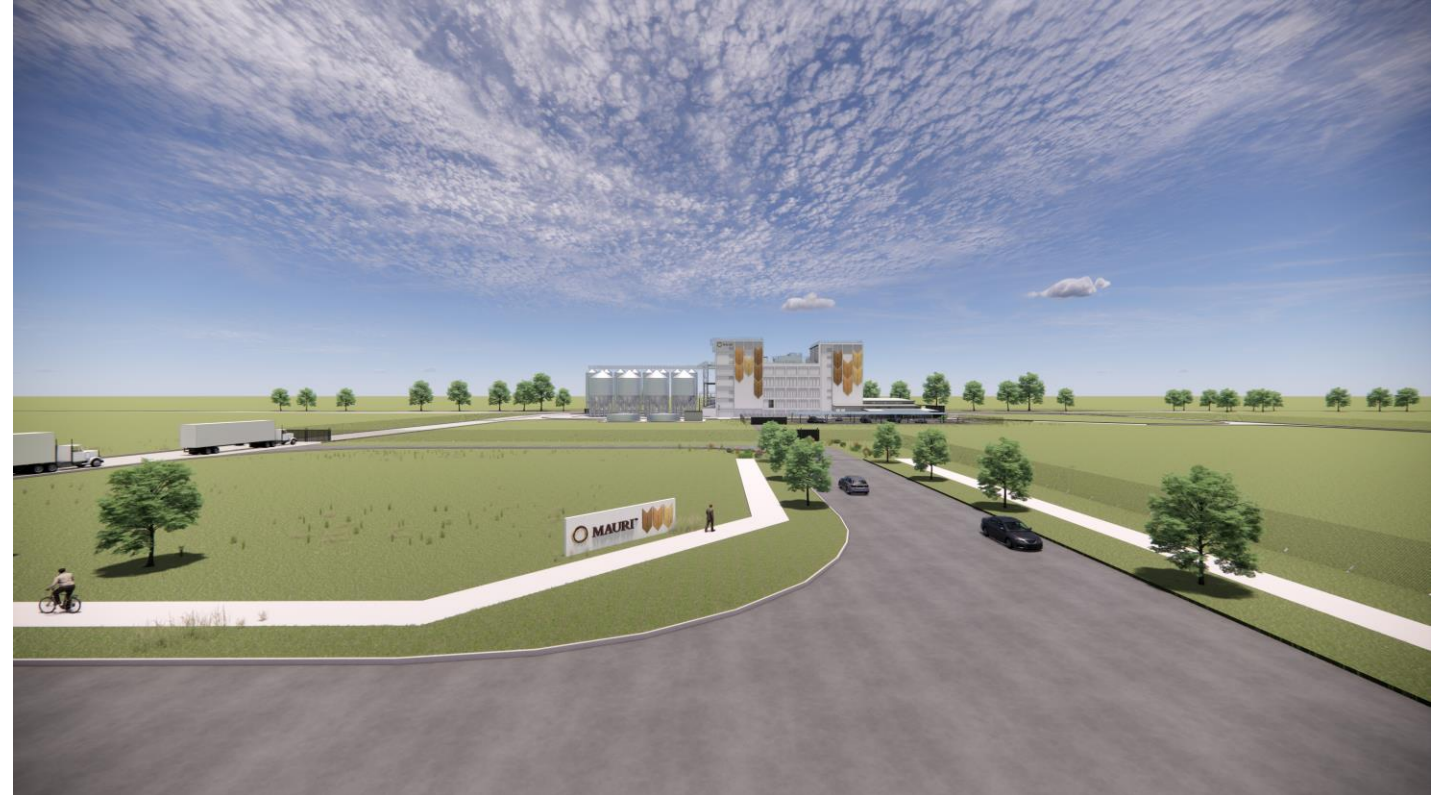
Andrew Williams

Project Manager

BESIX Watpac

Agenda

- Scope of Works
- Scope of Contract
- Program
- Sequence
- Future Works Packages





Scope of Works

Design, Construction and commissioning of;

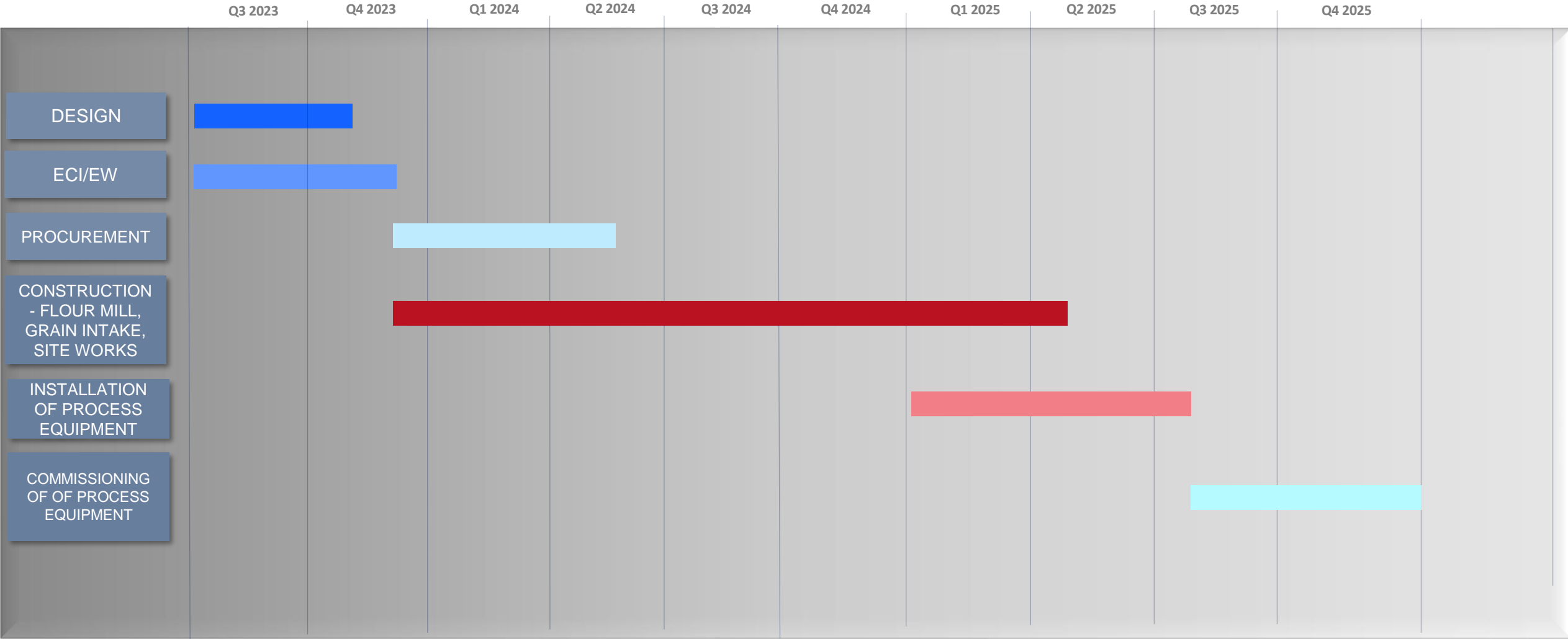
- Site, Civil and Infrastructure Works– 77,800m²
- Grain Intake Building and associated rail works
- Raw Material Storage Silos
- Flour Mill
- Office and Amenities
- Product Outload Building
- Site Wide Landscaping and Road Network



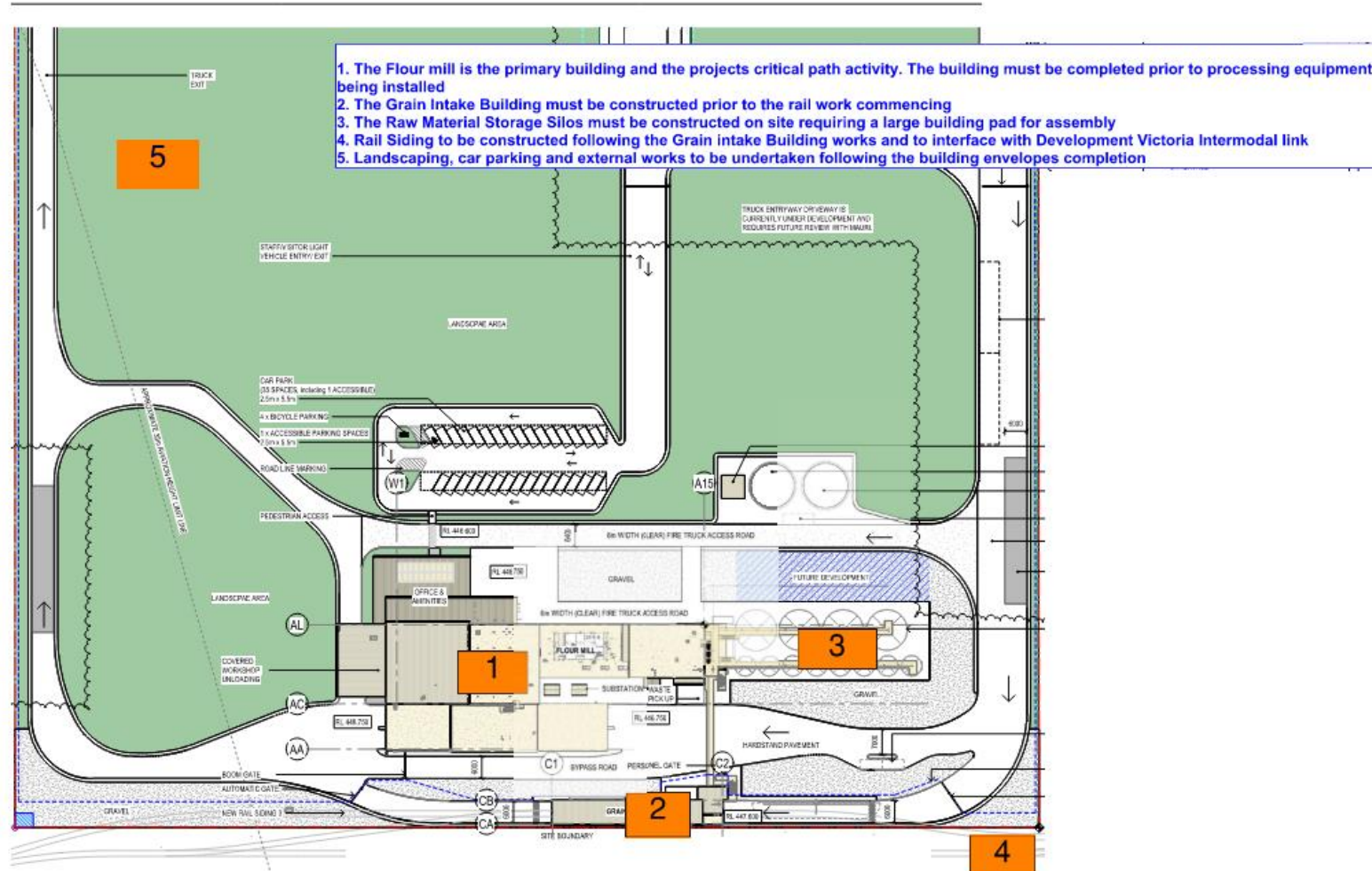
Scope of Contract

- Current ECI involving Design progression with Buildability, Programming, Cost Planning input.
- Installation & Connection of Process Equipment
- Design, Construction & Commissioning of building including services
- *Commissioning & Validation of Process Equipment by Mauri*

PROGRAMME



Program Sequence



Future Works Packages

Trade	Procurement Window
Civil Works	Q4 2023
Piling	Q1 2024
Structure- Formwork, Reinforcement, Concrete	Q1 2024
Roofing	Q2 2024
Ceilings and Partitions	Q2 2024
Epoxy Flooring	Q2 2024
Waterproofing	Q2 2024
Painting	Q2 2024
Doors and Hardware	Q2 2024
Joinery	Q3 2024
Metalwork	Q2 2024
Services- Electrical, Mechanical, Hydraulic, Compressed Air, Rail, Fire	Q1 2024
Raw Material Storage Silos	Q1 2024
Fencing & Gates	Q2 2024
Landscaping	Q3 2024

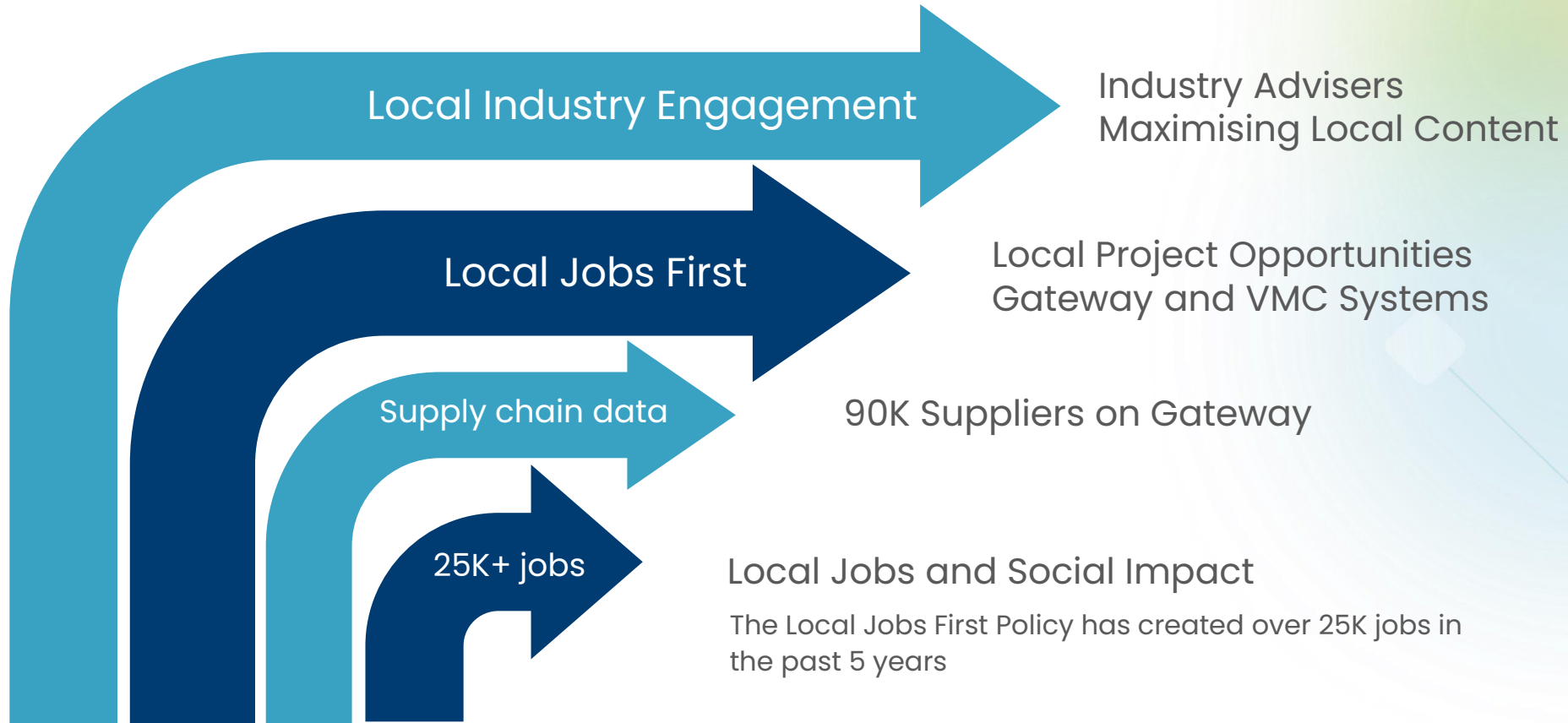


Noel Morton

Industry Adviser

ICN Victoria

Helping Local Win





What are you looking for?

Projects

Suppliers

?

What kind of work or project?



State



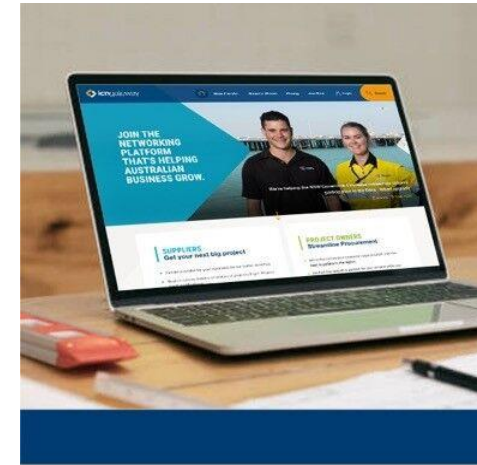
Region



Search

Register and maximise your profile

Gain visibility to project opportunities as they are published



✓ Online
Workshop

✓ Regular
newsletters

✓ Targeted
audience

ICN GATEWAY

Submit an EOI

Project Overview

Work Packages

MAURI is a division of George Weston Foods (GWF) and is one of Australia and New Zealand's largest flour manufacturers. GWF is a wholly owned subsidiary of Associated British Foods, a diversified food, ingredients, and retail group with operations across sugar, agriculture, retail, grocery, and ingredients. Mauri is a leading supplier of bakery ingredient solutions across Australia and New Zealand which offers a comprehensive portfolio of high-quality bakers and specialised application flours, yeasts, grains, bread and cake pre-mixes and improvers.

About the Project

Project Bluebird involves the design, construction and commissioning of a new state of the art flour mill facility located in the Ballarat West Employment Zone which will be capable of processing more than 480 tonnes of wheat per day. The flour mill's grain intake building will feed the production facility and will be capable of being serviced by truck and rail with a new rail siding which links to the new Ballarat West production - Ballarat - Ararat line intermodal siding. The product facility spans over 6 levels and features a complex of grain storage silos, grain processing equipment, tempering bins, finished product silos and an outload facility.

Project Timing

The project will be a greenfield construction with site utilities and amenity to support the manufacturing operation, including administration facility, carpark, grain intake building, and infrastructure established for further site expansion. The facility is targeted to be fully functional by 2026.

The primary trade elements include bulk earthworks, civil, piling, formwork, reinforcement, concrete placement, precast concrete, structural steel, hydraulic services, electrical services, mechanical services, compressed air services, fire services, rails services, silos, and internal finishes.

Schematic design of the project has been completed and relevant authority approvals are progressing. Detailed design of the project is due for completion in Q4 2023, and construction works likely to commence in Q1 2024.

Please submit your expression of interest for this project by following instructions below.

HOW TO REGISTER AN EXPRESSION OF INTEREST (EOI)

* To submit an EOI, companies must have an ICN Gateway company profile. Information on how to register your company on ICN Gateway is detailed below.

* This is an initial, generic EOI submission only. All companies who submit an EOI will be presented to companies who are interested in the project.

Project Overview

Work Packages

Work Package	Documents	Full Scope EOI
+ Any Opportunities		→ Create EOI Closes: 11 Jul 2024 (AEST)
+ Applied Floor Finishes		→ Create EOI Closes: 11 Jul 2024 (AEST)
+ Ceilings and Partitions		→ Create EOI Closes: 11 Jul 2024 (AEST)
+ Civil Works		→ Create EOI Closes: 11 Jul 2024 (AEST)
+ Compressed Air Services		→ Create EOI Closes: 11 Jul 2024 (AEST)
		→ Create EOI Closes: 11 Jul 2024 (AEST)



Project at a glance

- VIC Australia
- Pre-construction & Design Finalisation
- GEORGE WESTON FOODS LIMITED
- \$130M

Contact Details

Peter McCracken
Regional Manager Barwon Region

+61 407 505 477

[Send email enquiry](#)

CONNECT

Key Contacts and Channels



icnvic.org.au



[@icnvic](https://www.linkedin.com/company/icnvic)



Peter McCracken | Industry Adviser
0407 505 477 | pmccracken@icnvic.org.au



Jana Parker | Customer Service Lead
03 9864 6700 | info@icnvic.org.au

Question time

Steve Kennedy – Capital Investment Director, Mauri

Andrew Williams – Project Manager, BESIX Watpac

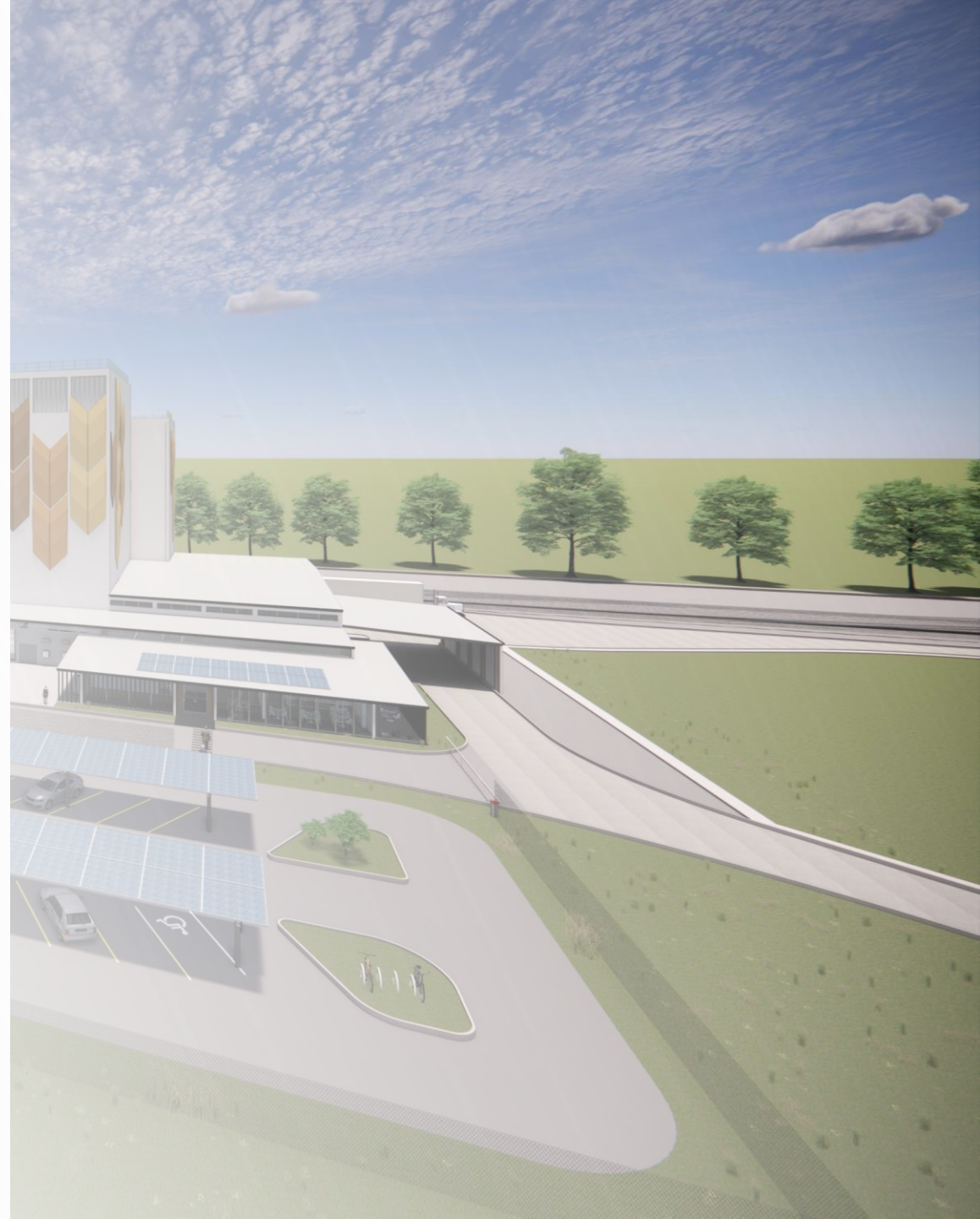
Andrew Bradley – Senior Industry Liaison, ICN Victoria



Additional Questions

Please email:

events@icnvic.org.au



Thank you.



Helping Local Win

Phone: +61 3 9864 6700

info@icnvic.org.au

icnvic.org.au

Take the survey

