



Industry Capability Network Spark North East Link

Wednesday 29 November, 2023



Welcome

Andrew Bradley- Senior Industry Liaison



Welcome

Acknowledgement Of Country

Our meeting is being held on the lands of the Wurundjeri Woi-wurrung people of the East Kulin Nation and I wish to acknowledge them as Traditional Owners. I would also like to pay my respects to their Elders, past and present, and Aboriginal Elders of other communities who may be here today.



NELP Welcome

Paul Thomas, North East Link Project



SPARK NEL Introduction, Progress and 2024

Steve Wille – Construction Director

North East Link Tunnels



- Twin **6.5km three-lane** tunnels
- Three key interchanges
- New infrastructure e.g. **Motorway Control Centre**

- Expected works timeline: **2022 > 2028**
- **\$11.1 billion** primary package
- Delivered by the **Spark consortium**

Spark Partners

- Multi-national consortium
- Significant worldwide project experience
- October 2021: awarded Tunnels contract
- Public-private partnership (PPP) with a difference
- Collaborating to succeed together



Watsonia



August 2022



November 2023



Winsor Reserve



July 2022



November 2023

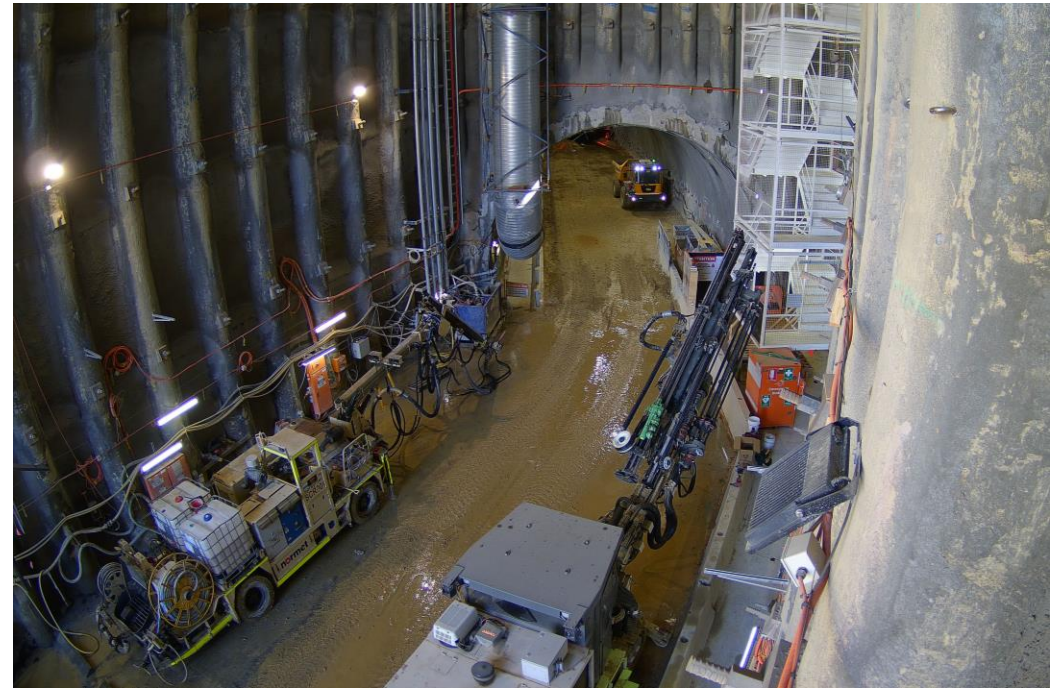


Vent Tunnel

August 2022



November 2023



Manningham



August 2022



November 2023



Bulleen Cut & Cover



August 2022



November 2023



Bulleen Surface Works



August 2022



November 2023



2024 – A massive year ahead

- Doubling turnover in construction operations.
- 2024 will see a massive increase of work happening on sites.



2024 – focus areas

- Predominant work is excavation and FRP.
- Subcontractors required for FRP, concrete, water proofing and anchoring to work.



2025 – The next steps

- Surfaces, civil and road works.
- Heavy mechanical, electrical and structural works in late 2025.





Thank you



Sustainability/Social Procurement

Rachael Lee – Sustainability and Social Outcomes Director

Joe Piasecki – Social Procurement Manager

Building a new way forward

The contribution of sustainability + social outcomes



Sustainability + Social Outcomes: The Big Picture Why



Buildings and
infrastructure contribute

70%

of GHG
emissions globally

\$billions

of investment in infrastructure
with the clear expectation that it
will be leveraged to deliver social,
environmental and economic
outcomes



Infrastructure projects are
being increasingly
scrutinized to make sure
they are doing good for
people + the environment

North East Link Tunnels: Impact at Scale

\$11 billion
investment

3,500,000
tonnes of
concrete

12 million
tonnes from
TBM
excavation

8,000
jobs during
the build

\$90 million
social
procurement
spend

30%
recycled
material use

30%
carbon
reduction



Our ambition is to deliver
unprecedented outcomes

What we're focused on

- Engaging Aboriginal businesses + workforce
- Low carbon + recycled materials
- Women in construction
- Non-potable water use + water reductions
- Prioritising spend with social enterprise
- Energy efficient plant + processes
- Creating opportunities for priority job seekers
- Trials + innovation
- Training and development of apprentices, trainees and cadets

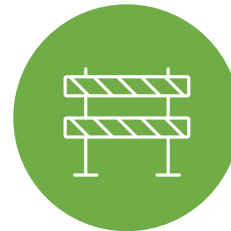
Our success is dependent on you



Early engagement



Recommend opportunities + innovations



Communicate constraints



Provide quality reporting data

Success to date



SafeRoads Rubber T-Lok Barriers



Foundation in Civil Program for Women



Humes Carbon Neutral Culverts



Monero + Yarra Contracting



Willan Inclusive Employment Program



Thread Group/RWW Group



Trial of plastic pipe under pavement



Thank you

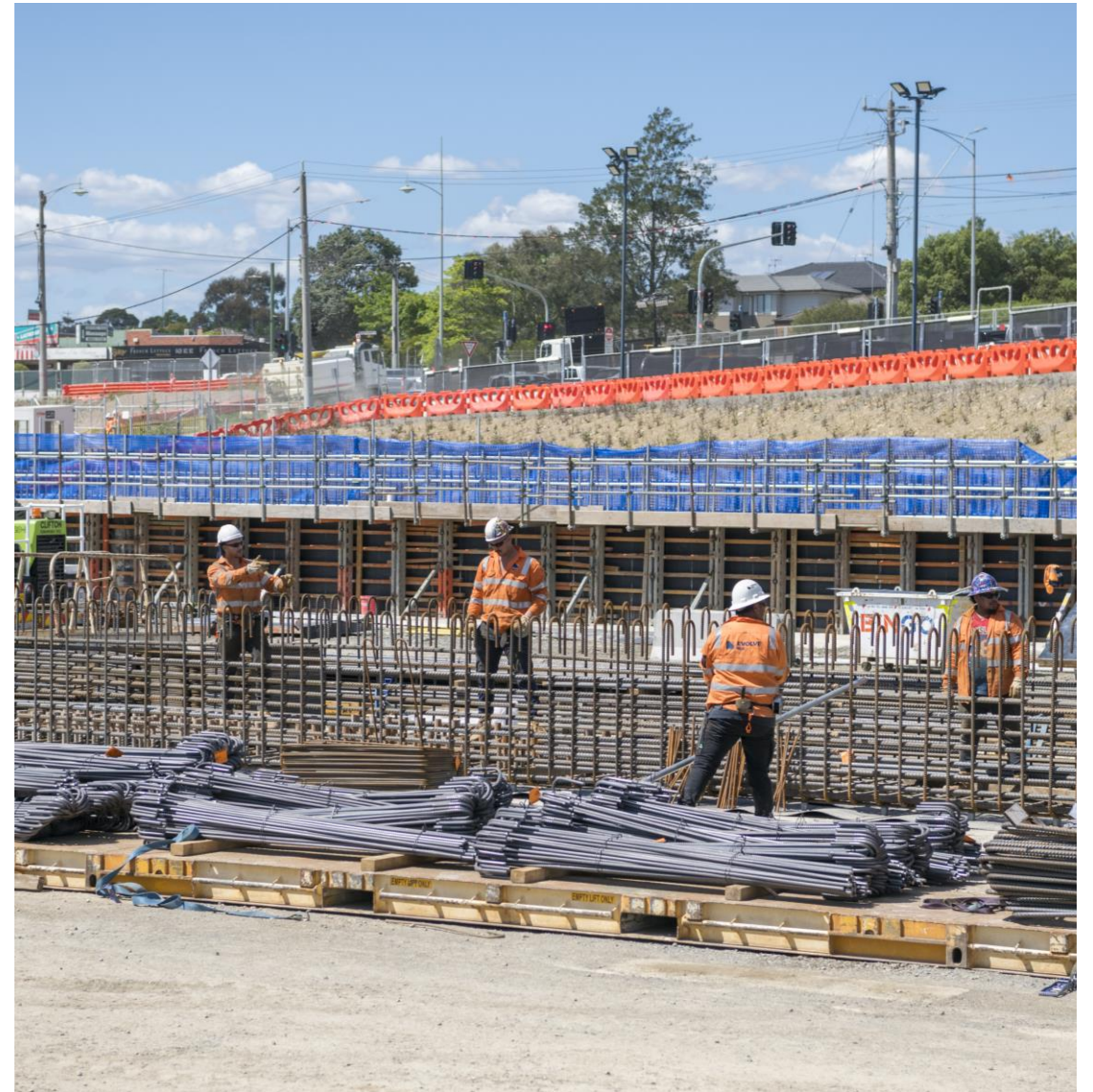


HSE Update

John Naoum – Health and Safety Manager

Health and Safety

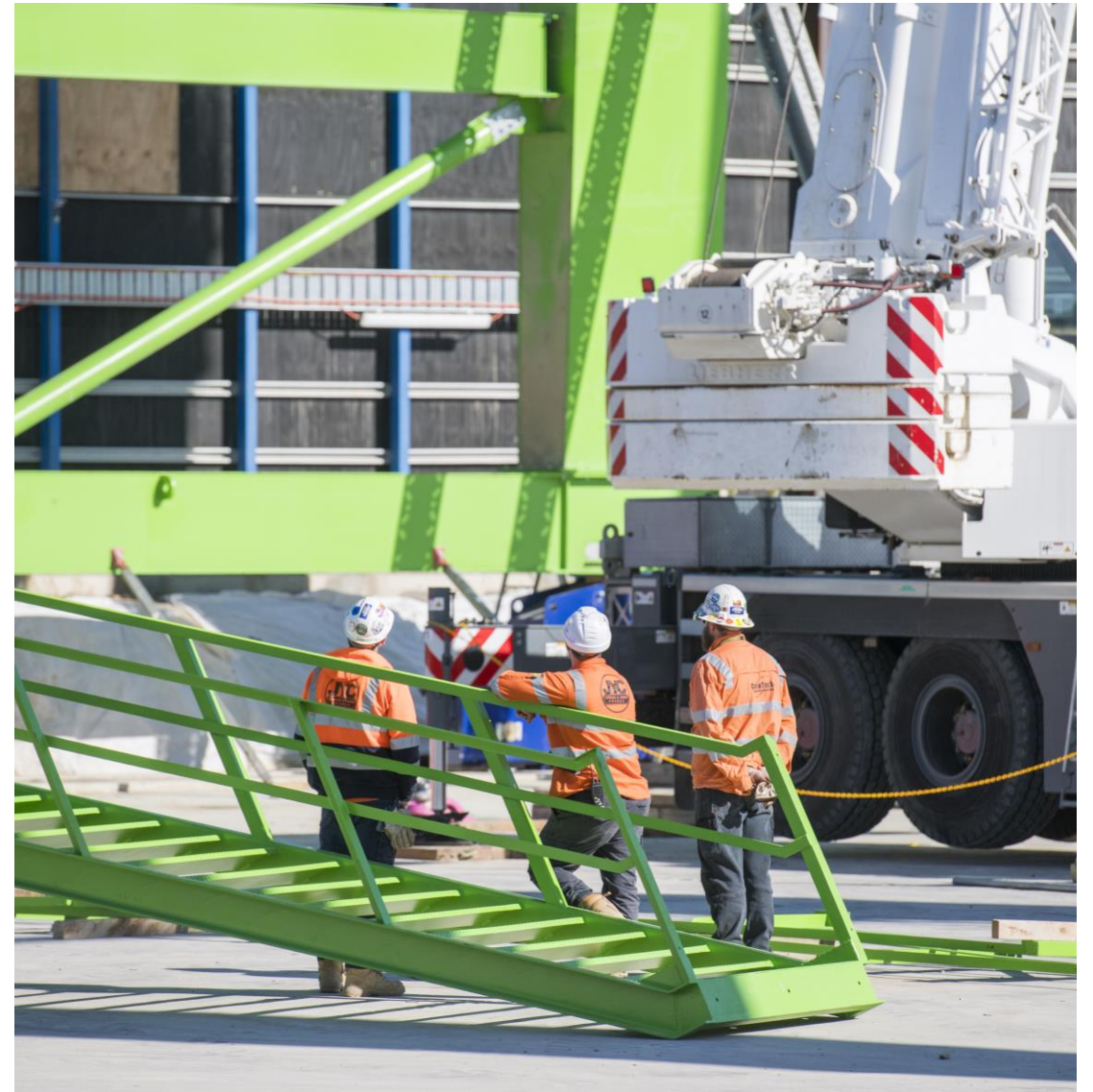
- Our vision is to “leave the industry better than we found it”
- We take seriously the continual improvement of ourselves, our contractors and the industry.
- Our commitment commences at the pre-qualification phase and continues through to demobilisation.



Health and Safety

The Health and Safety Questionnaire has been prepared to gain an understanding of your ability to be able to demonstrate fundamental compliance to key Occupational Health and Safety legislative requirements by providing information or evidence to demonstrate the following:

- Current and past performance, by providing information on your workers compensation and safety performance metrics



Health and Safety

- The processes you have for:
 - Risk Management
 - Hazard identification and control
 - Safe Work Method Statements
 - Monitoring your workers and workplace
 - Incident and the safe return to work of an injured employee
 - Providing information, instruction, training and supervision



Health and Safety

- Heavy Vehicle National Law (HVNL) and Chain of Responsibility
- The Heavy Vehicle National Law Act 2012 commenced in 2014, providing consistency in heavy vehicle operations across most of Australia.
- A Heavy Vehicle is a vehicle with a GVM or ATM of more than 4.5 tonnes



Health and Safety

- Chain of Responsibility (CoR) is the part of the Heavy Vehicle National Law (HVNL) that makes parties other than drivers responsible for the safety of heavy vehicles on the road.
- Everyone who works with heavy vehicles - from the business that employs a driver or owns a vehicle, to the business that sends or receives goods, is accountable for the safety of the heavy vehicle, its driver, and its load throughout the journey.
- What do we need if you are subject to HVNL:
 - A HVNL Management Plan
 - An audit certificate indicating that your plan complies to HVNL requirements





Thank you



SPARK Project Systems

Mark Harrington – Deputy Commercial Director

Commercial System Overview



FELIX	MINERVA	TEAMBINDER	KOFAX	SAP
1. Vendor Registration	1. Progress Claim Submission	1. All correspondence	1. Invoice Submission	1. Purchase Order Creation
2. Vendor Qualification	2. Progress Claim Approval	2. Submission of Variations, extension of time and Claims	2. Invoice and approved progress claim submission	2. Payment System
3. Vendor Tender Submission and Communication				

2024 Procurement Opportunities



Structural and FRP works



Waterproofing and anchoring works



Commencement of Tunnelling works



Mechanical, Electrical and Building works

Surface works, excavation and Spoil removal





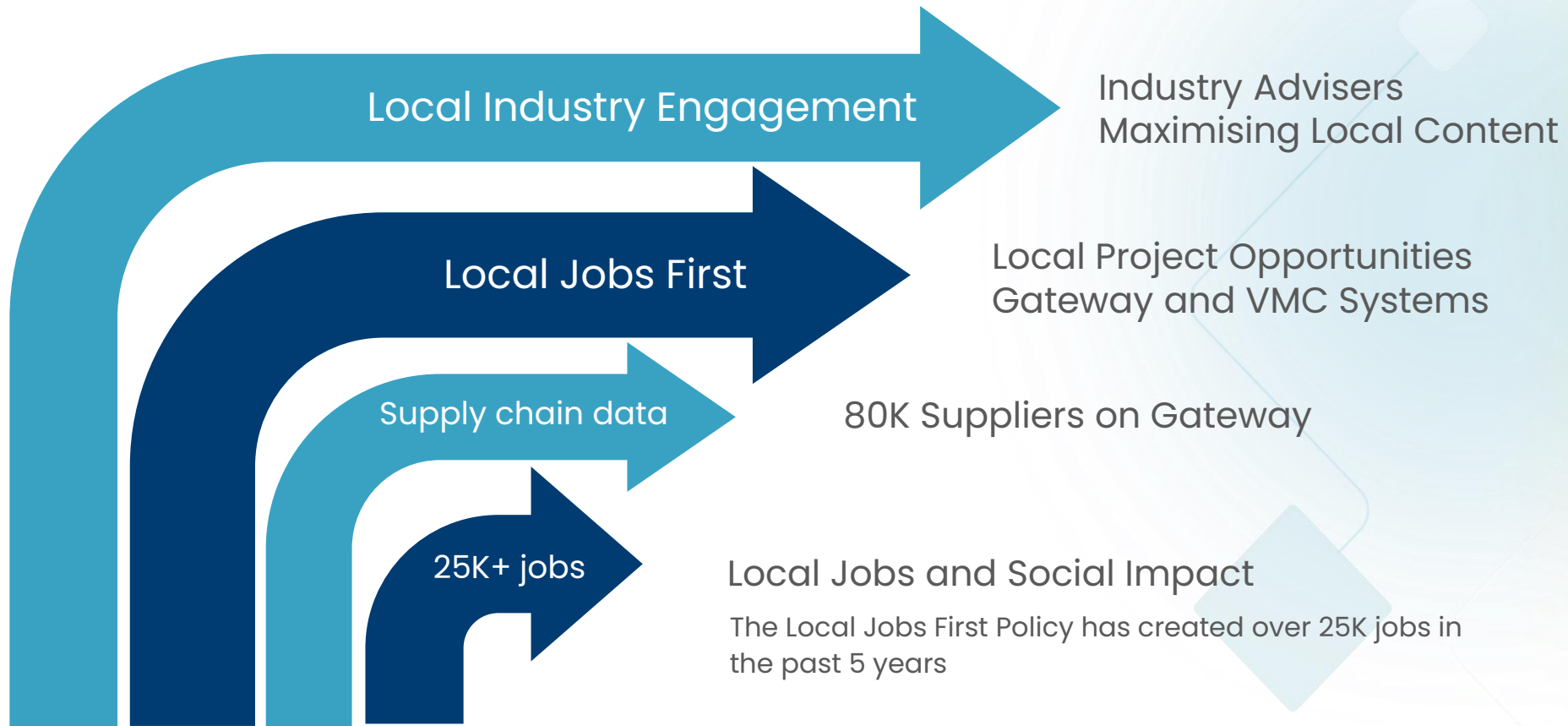
Thank you



ICN VICTORIA

Andrew Bradley - Senior Industry Liaison

Helping Local Win



Local Jobs First policy in action

Jacaranda Industries

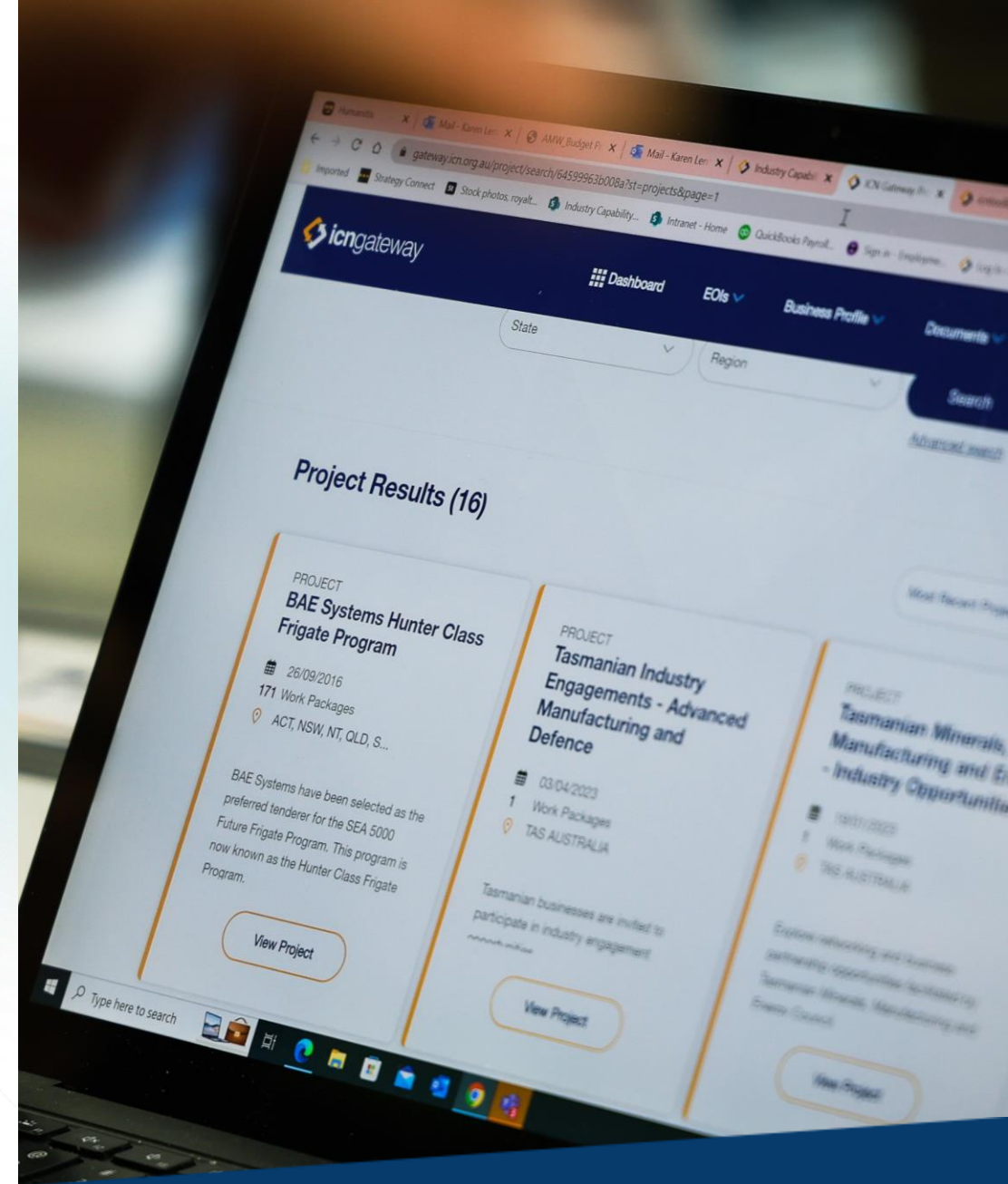
- Early design scope
- ICN Vic connection
- Maximised local content
- Social procurement outcomes



ICN Gateway

Sign up!

- areas of expertise
- new skills and products
- capabilities and specialties
- industries you serve
- major projects and clients
- certifications, awards and achievements



How To Connect – ICN Gateway

The screenshot shows the ICN Gateway website interface. At the top is a dark blue navigation bar with the 'icngateway' logo on the left and navigation links for 'Home', 'How it works', 'Success Stories', 'Pricing', 'Join Now', 'Login', and a search bar on the right. Below the navigation bar, a breadcrumb link 'Back to search results' is visible. The main heading is 'Spark - North East Link'. Below the heading are three tabs: 'Project Overview' (which is active), 'Work Packages', and 'Associated Opportunities'. The 'Project Overview' tab contains two sections: 'About Spark' and 'Project Overview'. The 'About Spark' section describes the consortium and the project. The 'Project Overview' section provides details about the North East Link project. To the right of the text is a graphic for 'SPARK NORTH EAST LINK' featuring a circular arrangement of colorful vertical bars. Below the graphic is the heading 'Project at a glance'.

icngateway

Home How it works Success Stories Pricing Join Now Login Search

Back to search results

Spark - North East Link

Project Overview Work Packages Associated Opportunities

About Spark

Spark is a multi-national consortium featuring world leading construction companies and one of the largest road and tunnel operators in Australia and has awarded the contract to build the North East Link Primary Package PPP. The Spark consortium consists of WeBuild, GS Engineering and Construction, CPB Contractors, China Construction Oceania, Ventia, Capella Capital, John Laing Investments, DIF and Pacific Partnerships.

Project Overview

The North East Link (NEL) is Victoria's largest road project and represents the 'missing link' in Melbourne's transport network. The project will connect the M80 with the Eastern Freeway linking key growth areas in the north and south-east. It includes upgrades to the Eastern Freeway, a dedicated Doncaster Busway, more than 25 kilometres of new and upgraded cycling and walking paths, and improvements to community facilities including local sports grounds.

Project at a glance

How To Connect – ICN Gateway

The screenshot shows the ICN Gateway website interface. At the top is a dark blue navigation bar with the 'icngateway' logo on the left and a search bar on the right. The search bar contains a magnifying glass icon and the text 'Search'. In the center of the navigation bar are several menu items: a home icon, 'How It works', 'Success Stories', 'Pricing', 'Join Now', and 'Login' with a user icon.

Below the navigation bar is a dark grey header with five tabs: 'Work Package', 'Documents', 'Full Scope EOI', 'Partial Scope EOI', and 'Status'. The 'Work Package' tab is currently selected.

The main content area is divided into sections. The first section is titled '— General' and contains a single item: '+ Any Opportunities'. To the right of this item is a link '→ Create EOI', the text 'Closes: 30 Jun 2024 (AEDT)', and a green circle with the text 'Open'.

The second section is titled '— Miscellaneous' and contains four items, each with a plus sign icon on the left and a 'Closed' status on the right. Each item has two 'Closed' dates listed: '26 May 2022 (AEDT)'. The items are:

- + Acoustic Spoil Shed (Simpsons Barracks)
- + Asbestos Removal
- + CCTV (Stormwater Drains and Sewer)
- + Civil Consumables



Thank you



Questions and Answers