



Industry Capability Network

Greater Shepparton Showcase

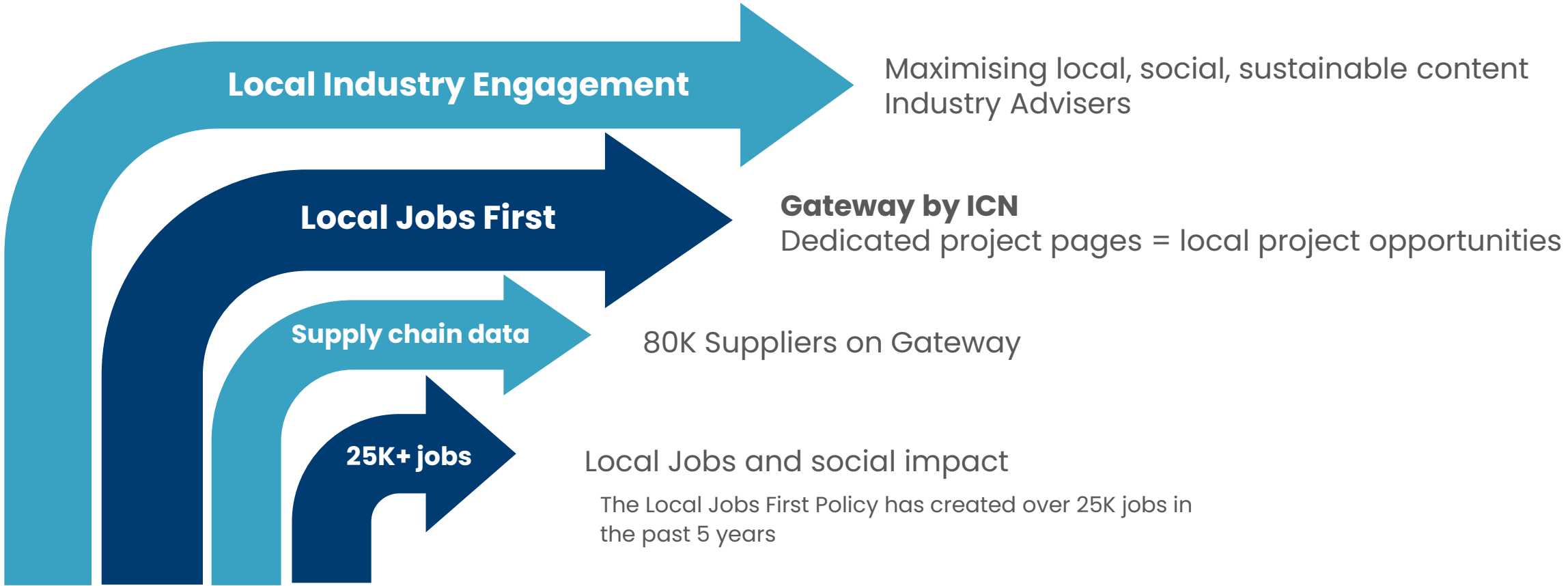
Hosted By ICN Victoria

Presentation overview

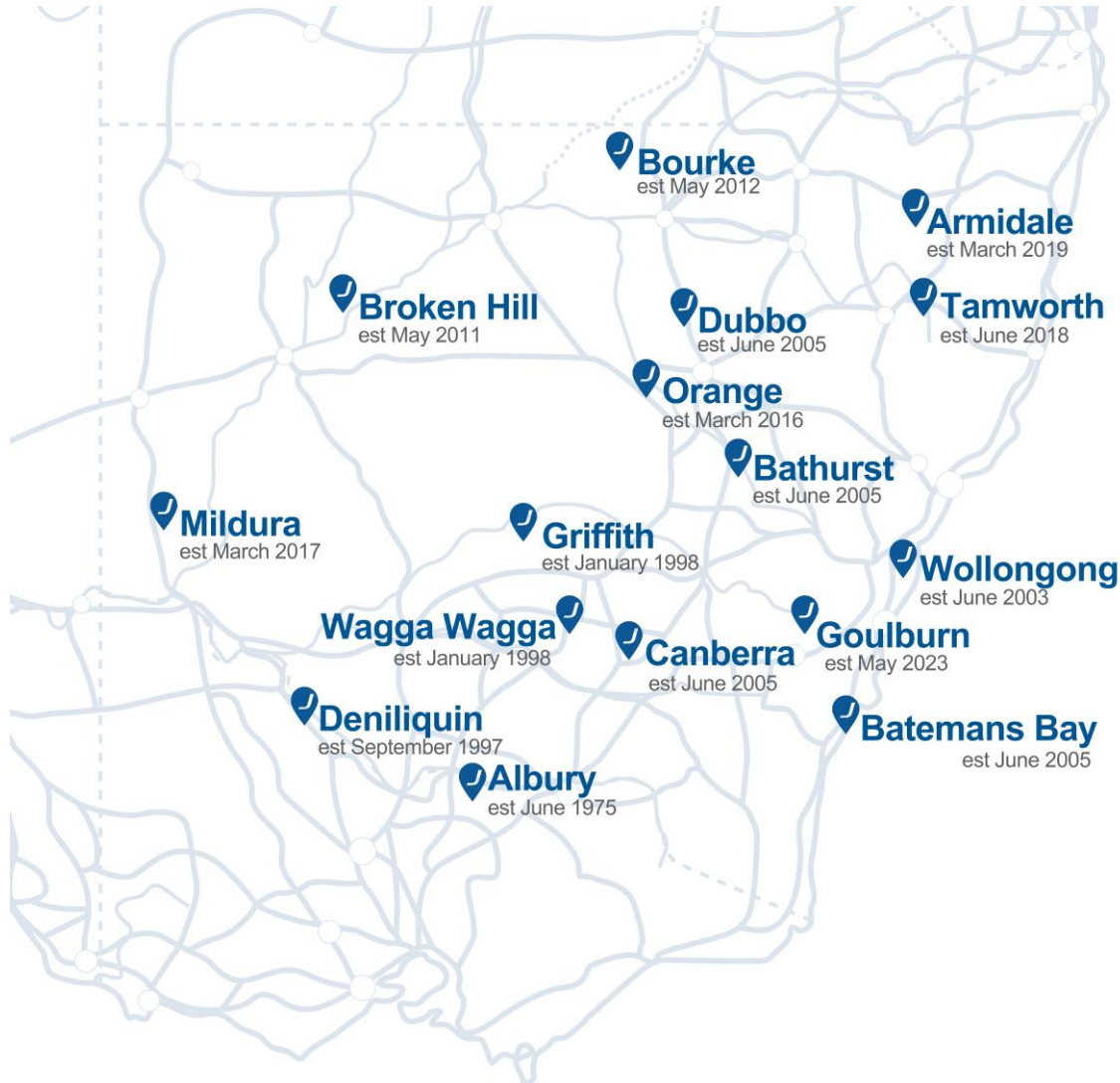
1. **ICN overview**
2. **Project: Benalla Police Station**
3. **Project: Suburban Rail Loop Linewide**
4. **Project: Community Safety Building Authority investments**
5. **Council: Greater Shepparton Council**
6. **Gateway By ICN**
7. **Other project opportunities through ICN**
8. **Closing remarks by ICN**
9. **Networking**



“Helping Local Win”



Company Overview



Annual Turnover \$490M



**Albury Office
Established 1975**



16 Offices



**2611 Employees (Joss Group)
110 Employees in Construction
Regional Construction
Turnover \$120M**



Recent Regional Victorian Projects

- Wodonga
- Myrtleford
- Benalla



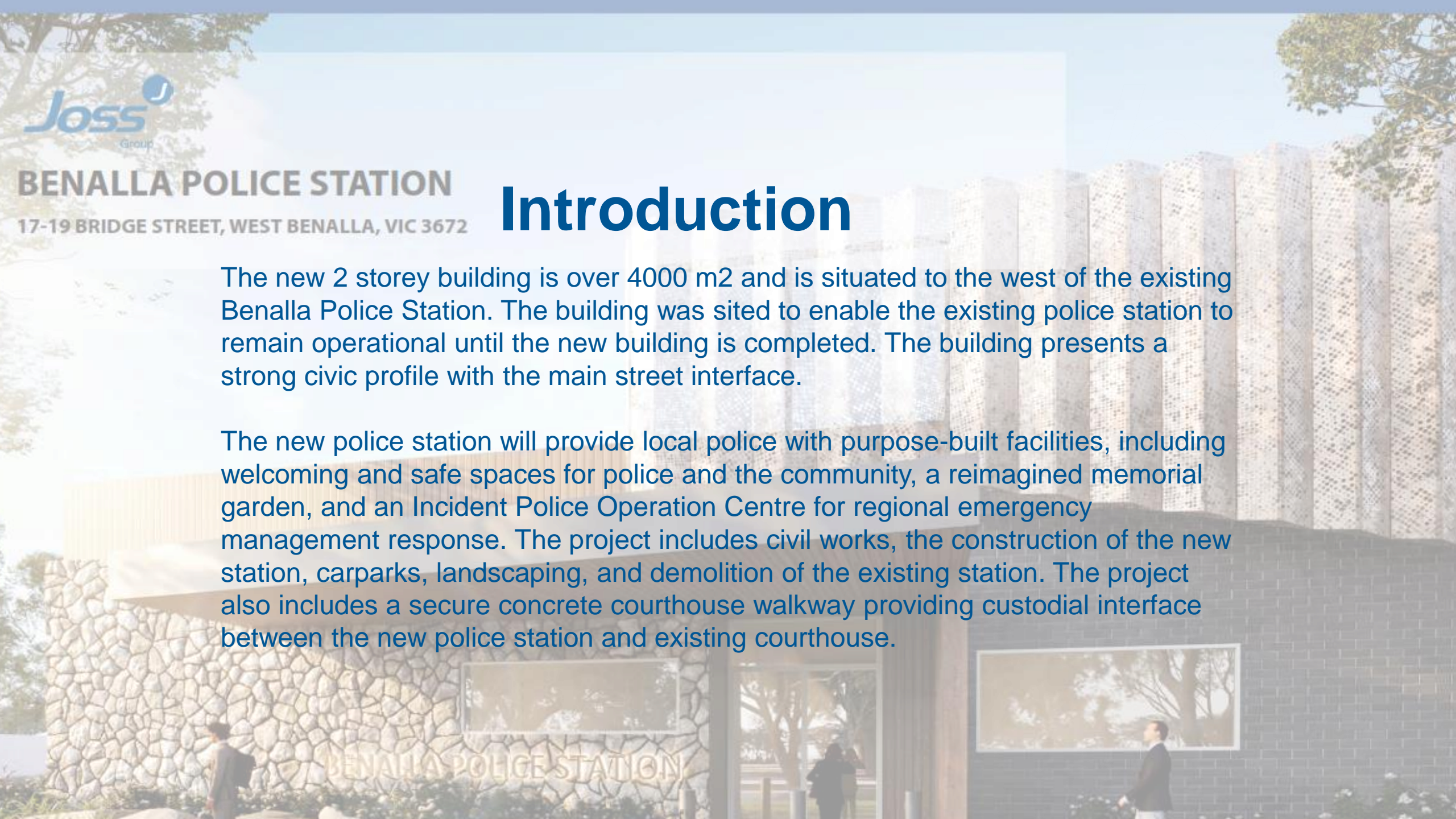
BENALLA POLICE STATION

17-19 BRIDGE STREET, WEST BENALLA, VIC 3672

Introduction

The new 2 storey building is over 4000 m² and is situated to the west of the existing Benalla Police Station. The building was sited to enable the existing police station to remain operational until the new building is completed. The building presents a strong civic profile with the main street interface.

The new police station will provide local police with purpose-built facilities, including welcoming and safe spaces for police and the community, a reimagined memorial garden, and an Incident Police Operation Centre for regional emergency management response. The project includes civil works, the construction of the new station, carparks, landscaping, and demolition of the existing station. The project also includes a secure concrete courthouse walkway providing custodial interface between the new police station and existing courthouse.



Opportunities

Trade Packages		Scope Summary
1	Tiling and waterproofing	To various wet areas
2	Blinds and curtains	Throughout the building
3	Plant enclosure louvres	Roof mounted plant decks
4	Carpentry	General including door installation and hardware
5	Signage – statutory, general and wayfinding	External and internal
6	Handrails – stainless steel and galvanised	At various locations



Collaborate openly with clients,
partners and the community.



Act fairly and reasonably.



Value each individual.



Work safely as a team.



Deliver on our promises.



Thank you



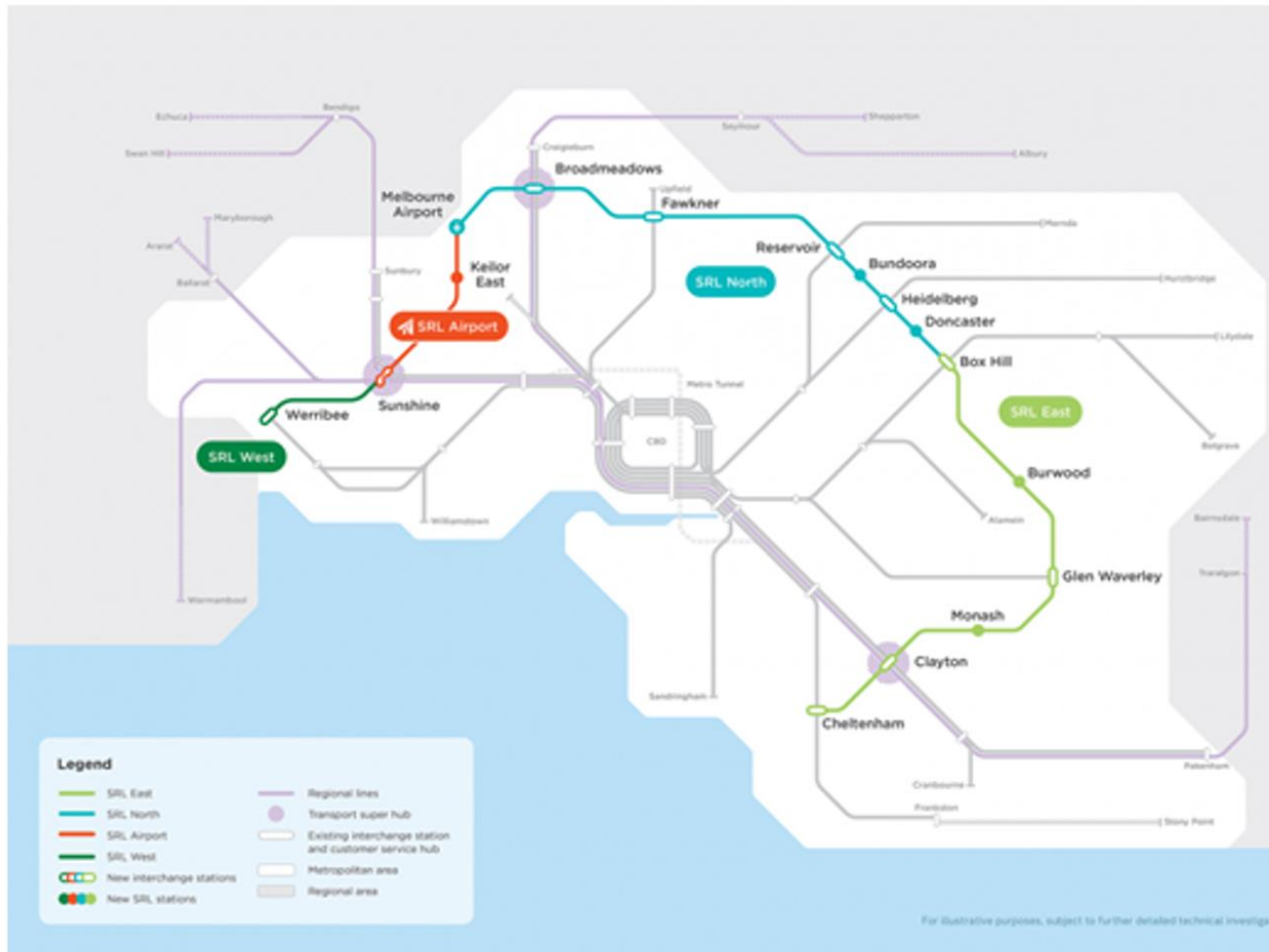
Peter Lutton – Contract Manager

peter.lutton@jossgroup.com.au

M: 0476 836 323

Coming Together

Overview of SRL



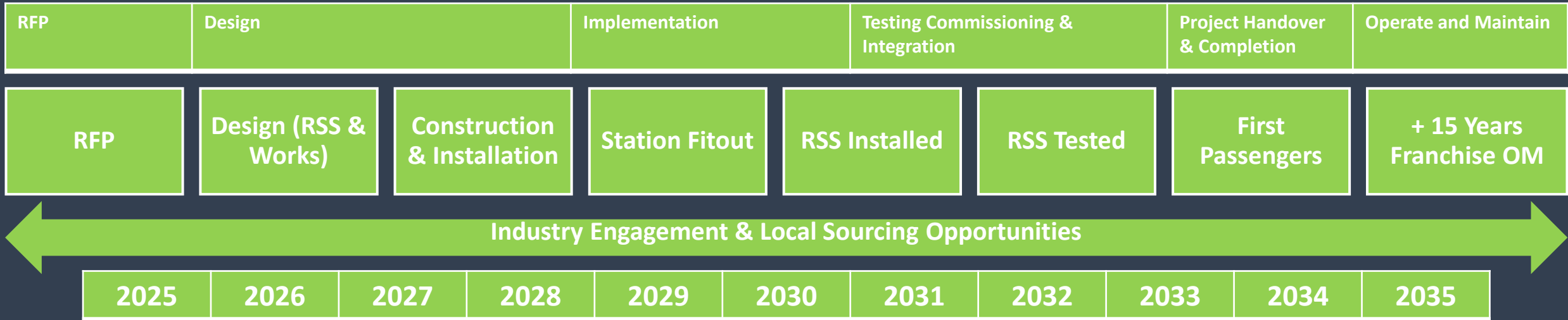
The Suburban Rail Loop (SRL) is a 90km orbital rail line from Cheltenham to Werribee.

SRL East, from Cheltenham to Box Hill, is the first collection of seven tenders to come to market.

SRL East comprises:

- Approx. 26km of twin tunnels
- Six new underground stations
- A train stabling yard and maintenance facility
- An emergency support facility

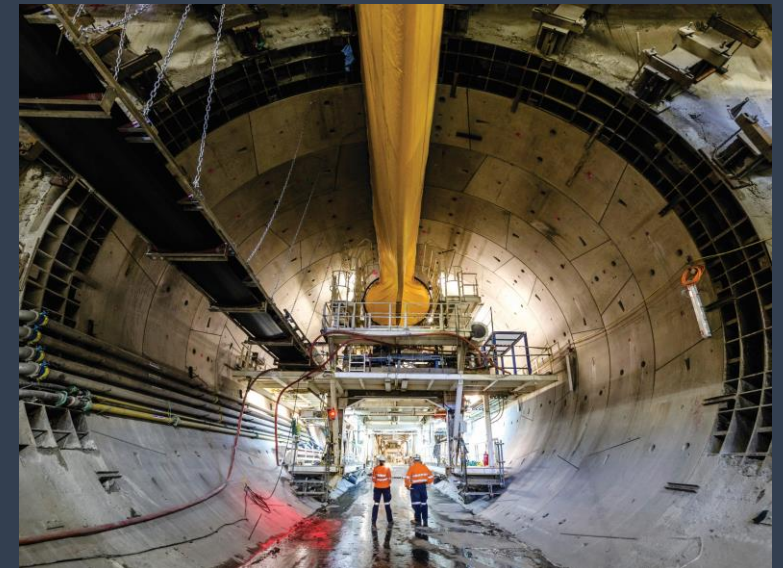
Delivery Strategy Overview



Work Package G - Scope

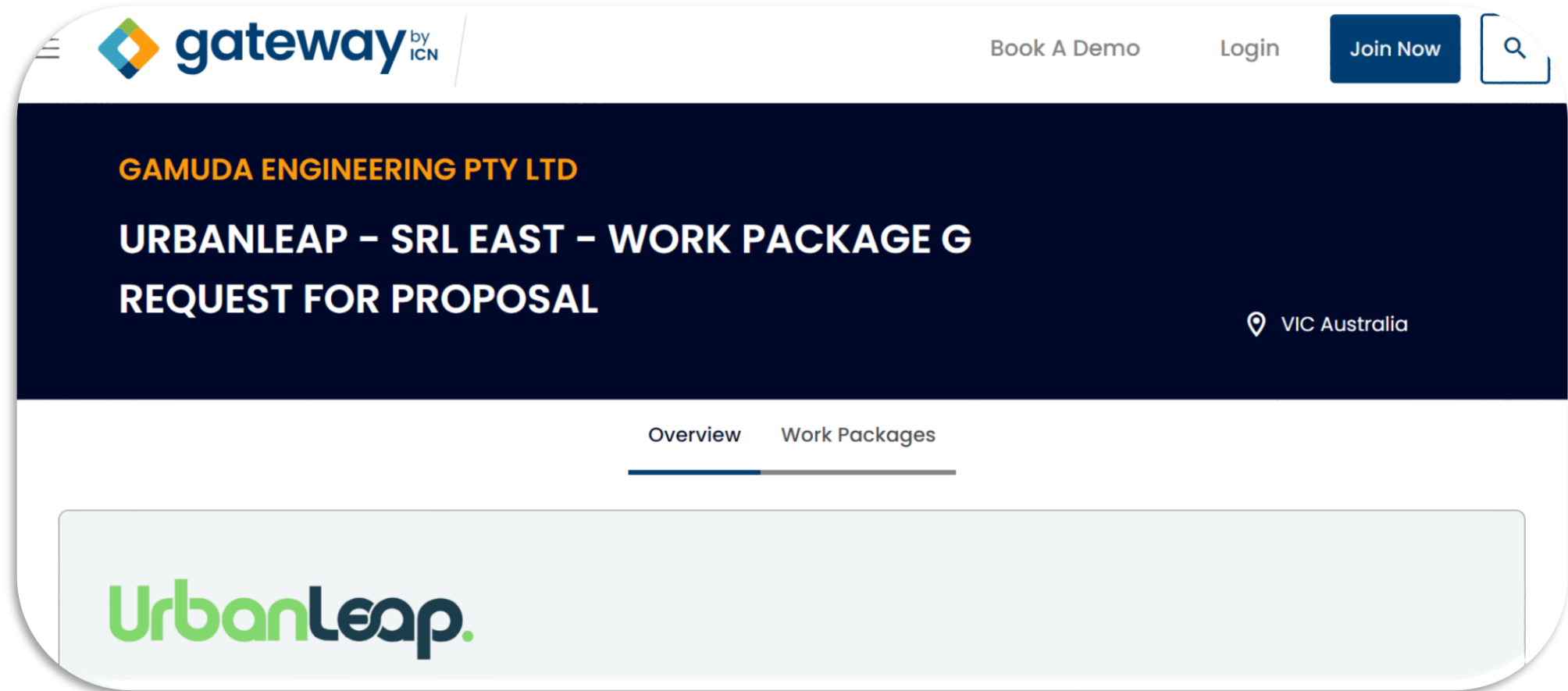
Wide ranging scope and opportunities for Victorian supply chains

- Tunnel fit out and SSY construction (Gamuda) - 100% local steel
- Signalling including Platform Screen Doors (Siemens)
- Rolling Stock Supply (Downer / Hyundai Rotem)
- Operate & Maintain (Keolis Downer)



Engage with UrbanLeap:

Register your interest for the project via Gateway by ICN



The screenshot shows the Gateway by ICN website interface. At the top left is the Gateway by ICN logo. To the right are navigation links: "Book A Demo", "Login", and a blue "Join Now" button. A search icon is also present. The main content area has a dark blue background with the following text: "GAMUDA ENGINEERING PTY LTD" in orange, "URBANLEAP – SRL EAST – WORK PACKAGE G" in white, and "REQUEST FOR PROPOSAL" in white. A location pin icon and "VIC Australia" are on the right. Below this is a navigation bar with "Overview" (underlined) and "Work Packages". At the bottom of the main content area is a light grey box containing the UrbanLeap logo.

Questions



Who we are:

The Community Safety Building Authority (CSBA) within the Department of Justice and Community Safety (DJCS) manages the planning, design, procurement, and construction of infrastructure across the Justice and Community Safety portfolio. (Corrections Victoria, Youth Justice, State Emergency Services, Country Fire Authority, Life Saving Victoria, Vic Institute of Forensic Medicine)

The Fire Services & Emergency Services within CSBA manages and delivers infrastructure projects on behalf of the Country Fire Authority (CFA), State Emergency Services (SES), Lifesaving Victoria (LSV) and Marine Search and Rescue (MSAR).

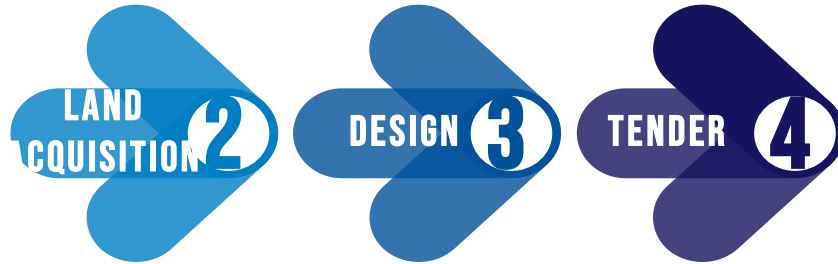
The **Country Fire Authority (CFA)** is a [volunteer fire service](#) responsible for fire suppression, rescues, and response to other accidents and hazards across most of [Victoria](#). CFA comprises over 1,200 brigades organised in 21 districts.

Victoria State Emergency Services (VICSES) is a volunteer-based organisation, providing emergency assistance to minimise the impact of emergencies and are the control agency for flood, storm, earthquake, tsunami and landslide and provide the largest road crash rescue network in Victoria. The SES covers all of Victoria, via 150 units across six regions.

Life Saving Victoria (LSV) is a peak agency for water safety with more than 37,000 members across 56 locations.

Upcoming CFA/ES/LSV Projects

9 Prioritised projects



1. Clyde
2. Dartmoor
3. Raywood
4. Kinglake West
5. **Heathcote (CFA, VICSES)**
6. **Rochester (CFA, VICSES)**
7. Kilmore
8. (VICSES)
9. Bannockburn (VICSES)
10. Kalkallo (VICSES)
11. Wyndham Vale (VICSES)

1. **Wyndham Vale**
2. **The Basin**
3. **Metcalfe**
4. **Serpentine**
5. **Riddells Creek**
6. Hoddles Creek
7. Leitchville
8. Winnindoo
9. Yarram
10. Mallacoota (VICSES, LSV, MSAR)
11. Wonthaggi (LSV)
12. Devon Meadows (SES)

1. Irymple
2. Beaufort
3. **Newborough**
4. **Pyalong**

Challenges



Budgets and escalating costs



Land search and acquisition



CHMP & whole of government policy



Planning, Council, DoTP, Utility requirements



Small regional projects spread across the State



Market interest/capacity



Innovation

Improvements

- Development of detailed costs plans & benchmarking
- Improved network engagement for land identification
- Early market engagement
- Updated design brief and typologies driving value for money
- AS2124 contract (Construct Only)– Unamended Department of Treasury and Finance (DTF) Contract Social Procurement, Local Jobs First application
- Environmentally Sustainable Design and whole of government policy implementation (net zero omissions)
- OH&S – Active Client Approach



CSBA Key Contact Points

CSBA Procurement: Tracey Cawsey
csba-procurement@justice.vic.gov.au

CSBA Fire Team: Shea Bailey
shea.bailey@justice.vic.gov.au

CSBA Design Manager: Billy Youssef
billy.youssef@justice.vic.gov.au

Greater Shepparton City Council

ICN Greater Shepparton Showcase – 30 April 2024

Overview

Draft Budget 2024/25

- Available in May and adopted in June
<https://shaping.greatershepparton.com.au/>

Tenders

- Usually released on Friday's onto website and in Shepparton News
<https://app.eprocure.com.au/greatershepparton/home>

Minor Civil Works Panel of Supplier Contract



Opportunities for Suppliers

Property

- Building Renewals and upgrades, Toilet replacements

Fixture, Fittings and Furniture

- Lighting upgrades, Gas conversions, Sports Court

Roads

- Intersections, streetscape upgrades, traffic islands, kerb & channel, road upgrades, guard railing

Footpath & Cycleways

- Shared paths, Footpaths

Drainage

- Pumps, Pump Station Upgrades, flood mitigation works

Recreational, Leisure and Community Facilities

- Hard Court, irrigation, Sports Infrastructure

Parks, Open Space & Streetscapes

- Parks & Playground
- Shadesails
- Native Open Space

Contact Details

Customer Service	5832 9700
Project Delivery Department	5832 9535
Procurement Department	5832 9830



Questions?



How to connect – Gateway by ICN

The screenshot displays the 'Gateway by ICN' interface. At the top, there are two tabs: 'Overview' and 'Work Packages', with 'Work Packages' being the active tab. On the left side, there is a sidebar with the following information:

- Victorian Health Building Authority** (with logo)
- VIC Australia** (with location pin icon)
- DEPARTMENT OF HEALTH** (with calendar icon)
- Project Primary Contact**
Michael Smith

The main content area shows a table of work packages under the 'Work Packages' tab. The table has the following columns: 'WORK PACKAGE', 'FULL SCOPE EOI', 'PARTIAL SCOPE EOI', and 'STATUS'. There are three rows of data:

WORK PACKAGE	FULL SCOPE EOI	PARTIAL SCOPE EOI	STATUS
Any Opportunities	19 Jan 2025		Open
Furniture, Fittings and Equipment	19 Jan 2025	19 Jan 2025	Open
Steel	19 Jan 2025	19 Jan 2025	Open

Other project opportunities

Cohuna Public Sector Residential Aged Care Service

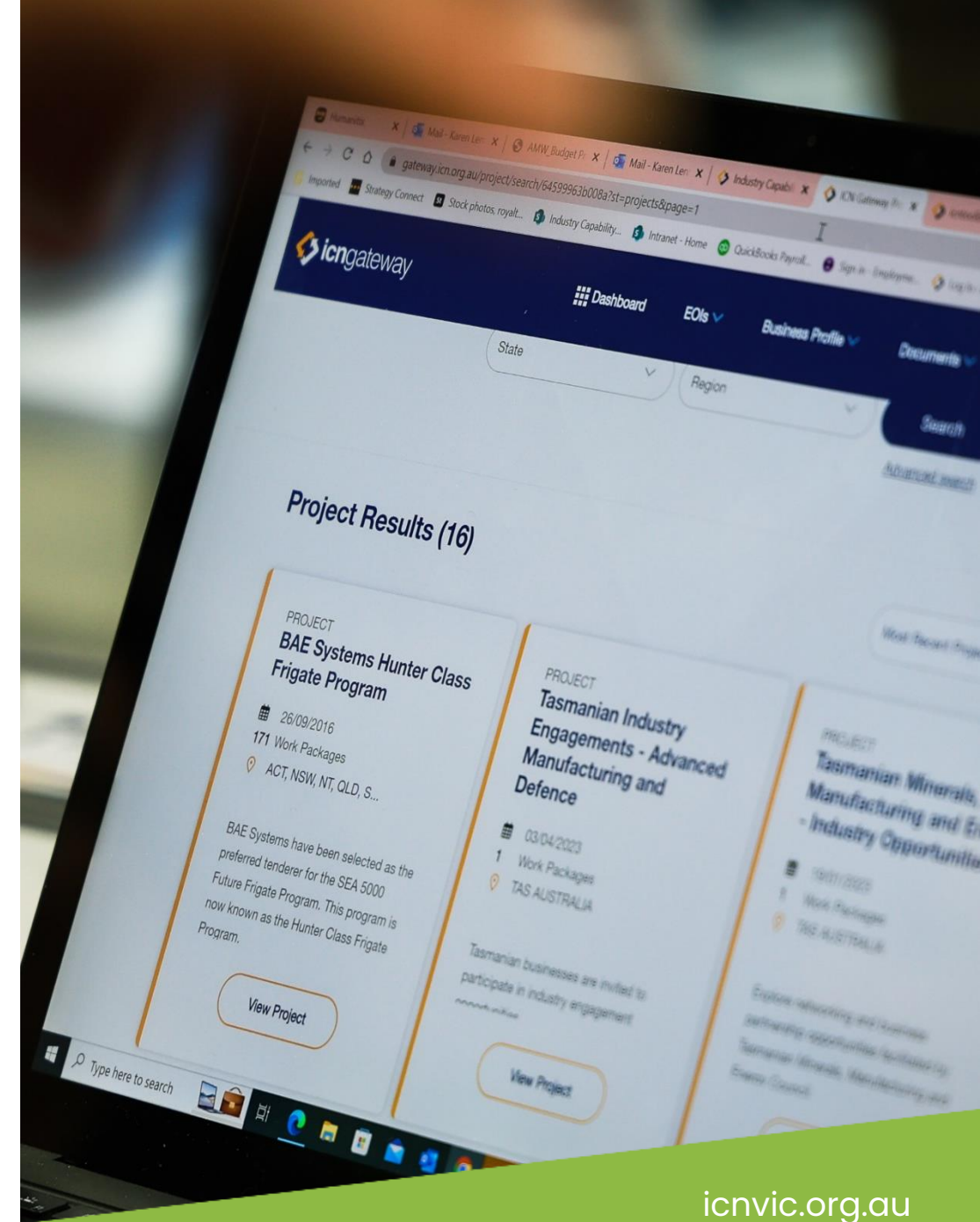
Barwon Women and Children's Hospital*

Goschen Rare Earths and Mineral Sands Project

Mansfield Public Sector Residential Aged Care Service

Bendigo Water Reclamation Plant Solids Handling Facility (Coliban Water)

Casey Hospital Emergency Department Expansion





Industry Capability Network

Networking
THANK YOU!