

**Suburban Rail Loop East – Line-wide Package**

March 2024

# **Meet the Buyer UrbanLeap**

**SRL Linewide – Package G**

# Acknowledgement of Country

UrbanLeap acknowledges the Traditional Custodians of the Lands on which we meet today, the **Wurundjeri People** of the **Kulin Nation**.

We pay our respects to First Nations Elders and to all Aboriginal and Torres Strait Islander peoples across Australia.

We recognise the unique and ongoing connection that First Nations people have to the land, water, sky and each other.

UrbanLeap is committed to building a legacy that emulates this care for Country and connection to community.

# Agenda

1. Overview of SRL
2. ICN Victoria Overview
3. A Network of World-Class Brands
4. Line-wide Work Package G background
5. Tunnels and Stations
6. Signalling
7. Rolling Stock
8. Engaging with UrbanLeap



## ICN Victoria Overview

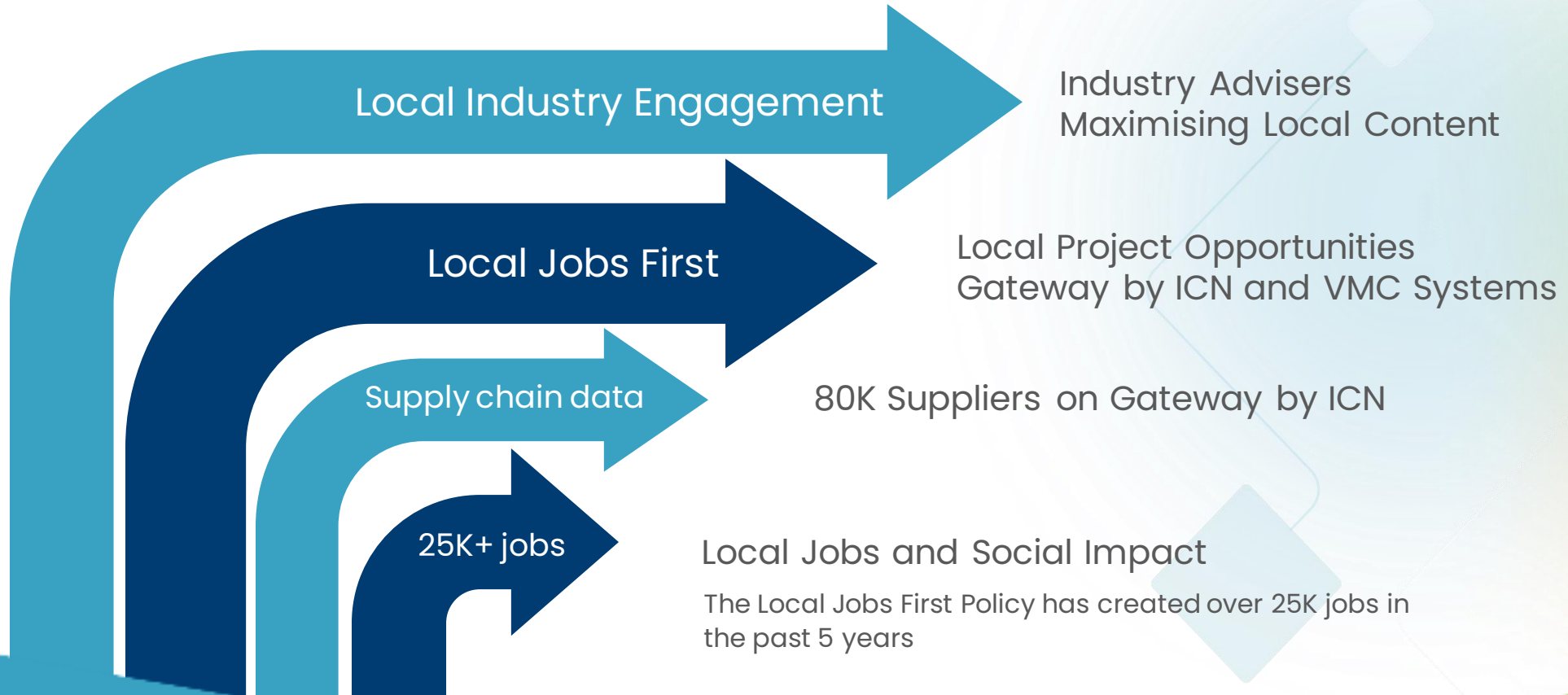
**Andrew Bradley**

**Senior Industry Liaison**

**ICN Victoria**



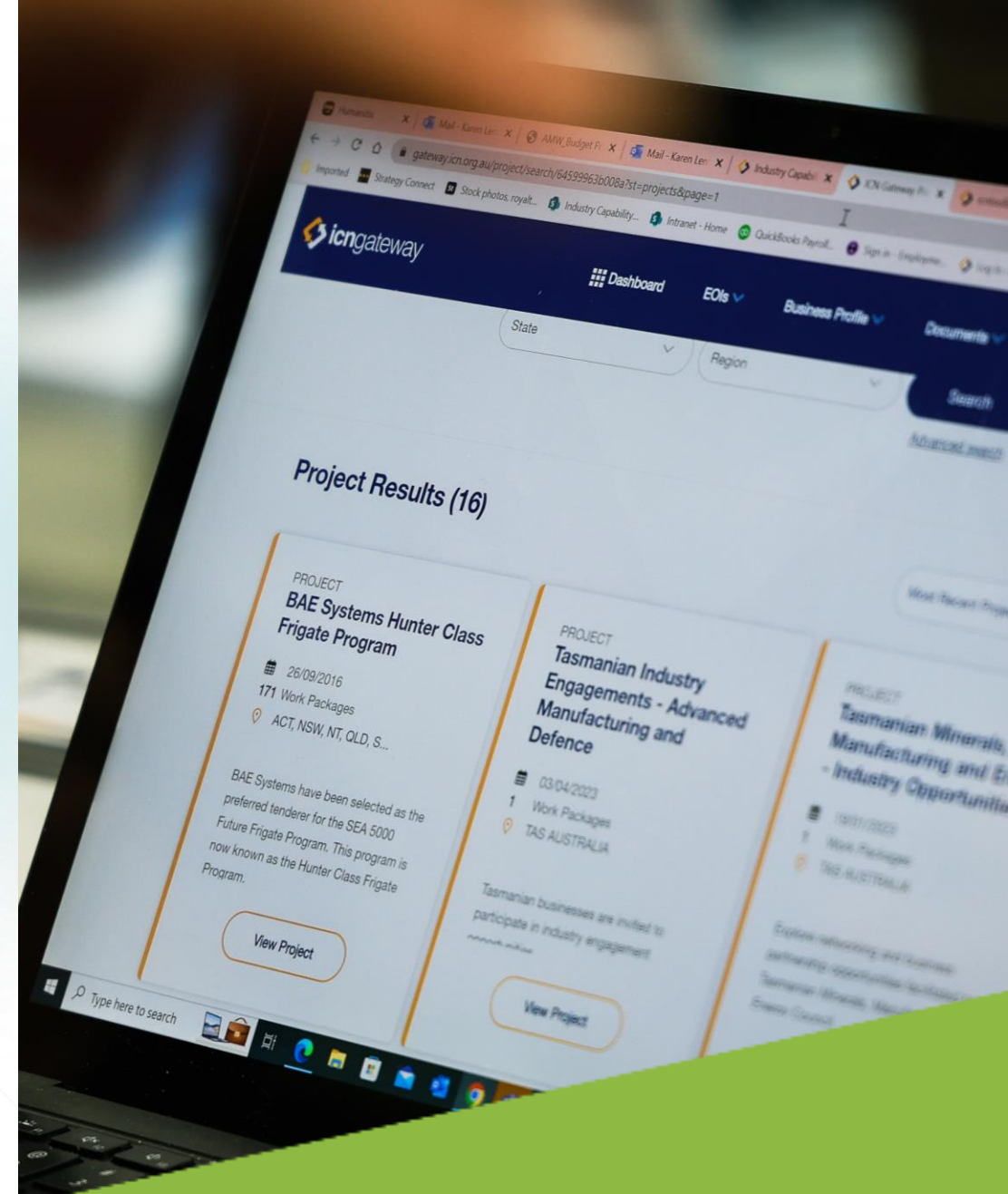
# Helping local win



# Gateway by ICN

## Sign up!

- areas of expertise
- new skills and products
- capabilities and specialties (local, social and sustainable)
- industries you serve
- major projects and clients
- certifications, awards and achievements



# How to connect – Gateway by ICN



- [https://gateway.icn.org.au/projects/10795/pg-10795?scroll\\_pos=0](https://gateway.icn.org.au/projects/10795/pg-10795?scroll_pos=0)

The screenshot shows the 'Overview' tab of the project page. At the top, there is a navigation bar with the 'gateway by ICN' logo, 'Explore topics' dropdown, 'Book A Demo', 'Login', and 'Join Now' buttons. Below the navigation is a dark blue banner with the text: 'GAMUDA ENGINEERING PTY LTD', 'URBANLEAP – SRL EAST – WORK PACKAGE G REQUEST FOR PROPOSAL', and a location pin for 'VIC Australia'. The main content area features the UrbanLeap logo, location 'VIC Australia', and company name 'GAMUDA ENGINEERING PTY LTD'. A 'Project Primary Contact' section lists 'Andrew Bradley' with a phone number '+61 447 446 091' and a 'Send Email' button. Below this is an 'Overview' section with a short paragraph: 'UrbanLeap comprising of (Gamuda Engineering, Keolis Downer, Siemens, AECOM, GHD, Hyundai Rotem and Downer Rail) is one of two shortlisted consortia developing its detailed proposal for the delivery of the Suburban Rail Loop - SRL East Works Package G.'

The screenshot shows the 'Work Packages' tab of the project page. It includes the same navigation bar as the overview page. Below the navigation, there is a section titled 'ICN GATEWAY COMPANY REGISTRATION' with a list of bullet points: 'Click here to register your company profile on ICN Gateway.', 'Support and assistance are available through the web links listed below.', 'An ICN Gateway company profile that accurately and effectively summarises your company is critical to using the services of the ICN Group - please ensure that your company invests the time and energy required to represent your company in the most effective manner possible.', and 'Companies should ensure that the email notification functionality within their ICN Gateway company profile is activated to include an appropriate level of coverage to Information & Updates, Major Projects and Regional Opportunities.' Below this are two links: '(1) ICN Gateway Setup Wizard' and '(2) ICN Gateway User Guide'. A summary section shows '2 Total work packages' and '2 Open work packages'. A 'Work packages' dropdown menu is visible. The main content area displays a table with the following data:

WORK PACKAGE	FULL SCOPE EOI	PARTIAL SCOPE EOI	STATUS
Supply, Manufacture and/or Subcontract of Works associated with the Linewide Package	23 May 2024	23 May 2024	Open
Supply, Manufacture and/or Subcontract works associated with Rolling Stock and Signalling Systems	23 May 2024	23 May 2024	Open



# Local Jobs First policy in action

## Jacaranda Industries

- Early design scope
- ICN Vic connection
- Maximised local content
- Social procurement outcomes





# Overview of SRL

# Coming Together

## Overview of SRL



The Suburban Rail Loop (SRL) is a 90km orbital rail line from Cheltenham to Werribee.

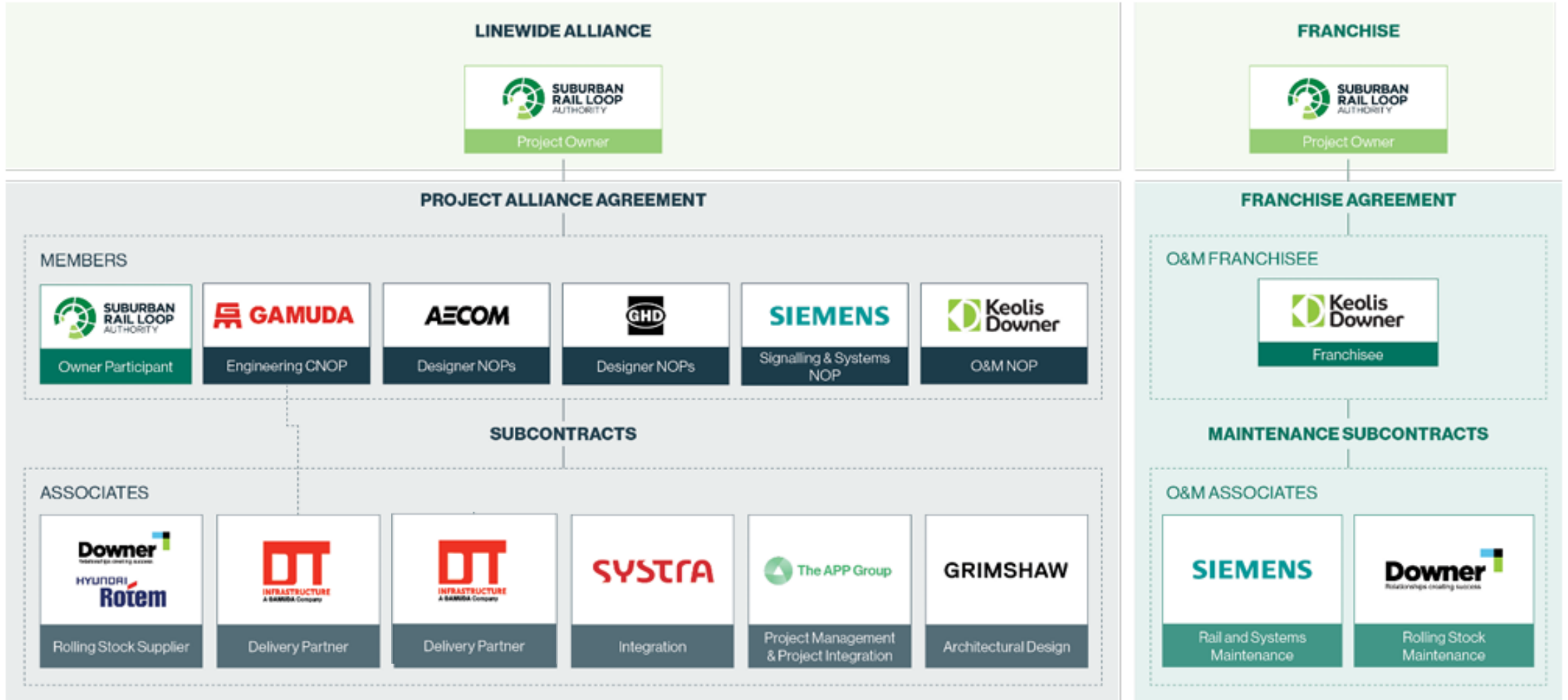
SRL East, from Cheltenham to Box Hill, is the first collection of seven tenders to come to market.

### SRL East comprises:

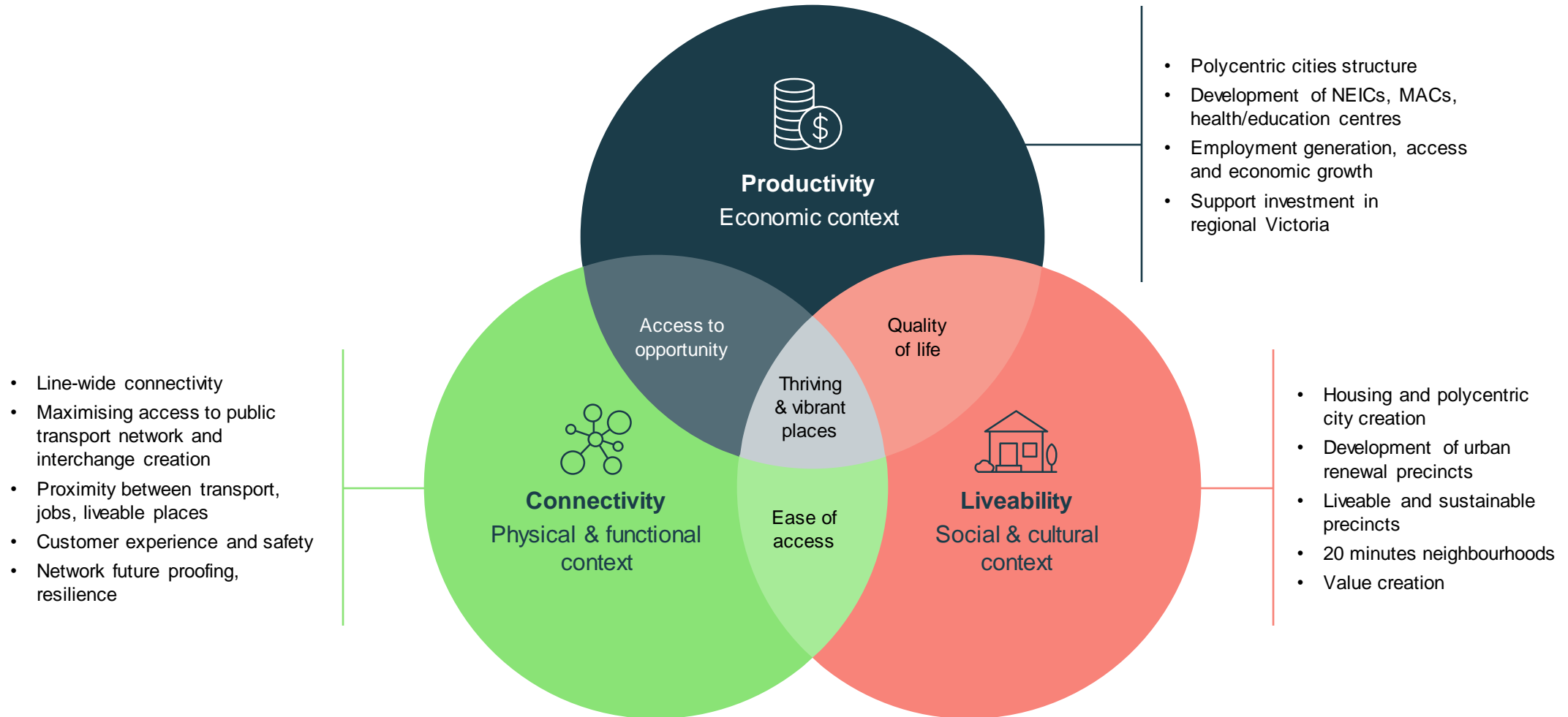
- Approx. 26km of twin tunnels
- Six new underground stations
- A train stabling yard and maintenance facility
- An emergency support facility

# Understanding Our Consortium

## A Network of World-Class Brands



# Line-wide Project Objectives





# Line-wide Package Objectives



## Public transport accessibility and customer experience

To deliver the Line-wide Package in a manner that facilitates the:

- Efficient connection of SRL East with each existing major metropolitan rail line;
- Optimisation of interchanges with other public transport modes; and
- Prioritisation of passenger amenity through reliability, efficiency, safety, accessibility and inclusivity.



## System Integration and SRL East Day 1 readiness

To undertake design, integration, engineering and assurance activities across all SRL East Main Works Packages to achieve a fully integrated rail line and support Day 1 readiness.



## Future proofing and flexibility

To design and construct the Line-wide Delivery Works using systems and methodologies which:

- Support flexibility and future expansion; and
- Adopt whole-of-life maintenance and renewal approaches compatible with SRL East tunnels' 100-year design life.



## Value for money

To ensure that the Line-wide Package:

- Is designed, constructed and operated in a cost-effective manner;
- Is delivered on time in accordance with relevant requirements and is fit for purpose; and
- Achieves optimum value for money outcomes for the State from both a systems and operations perspective and on a whole-of-life basis.



## State requirements

To procure and deliver the Line-Wide Package in accordance with State policies, including the Local jobs First Policy, Victoria's Social Procurement Framework and the Building Equality Policy.



## Stakeholders

To carry out the Line-wide Delivery Works and Line-wide O&M Activities in a manner that supports positive and collaborative relationships with, and minimises disruption to, stakeholders and the community.



## Safety

To achieve unrivalled health, safety and rail safety performance by actively safeguarding and enhancing the wellbeing of people, industries and the community in the safe delivery and operation of SRL East.



## Environment

To minimise impacts on the environment, including noise and vibration, air quality, electromagnetic interference, traffic and transport, heritage, waste, water and energy management and embodied environmental impacts.

# Delivery Strategy Overview

RFP	Design	Implementation	Testing Commissioning & Integration	Project Handover & Completion	Operate and Maintain
-----	--------	----------------	-------------------------------------------	-------------------------------------	-------------------------

RFP	Design (RSS & Works)	Construction & Installation	Station Fit out	RSS Installed	RSS Tested	First Passengers	+ 15 Years Franchise OM
-----	-------------------------	--------------------------------	--------------------	------------------	------------	---------------------	----------------------------



2025	2026	2027	2028	2029	2030	2031	2032	2033	2034	2035
------	------	------	------	------	------	------	------	------	------	------

# Work Package G - Scope

Wide ranging scope and opportunities  
for Victorian supply chains

- Tunnel fit out and SSY construction (Gamuda)
  - 100% local steel
- Signalling including Platform Screen Doors (Siemens)
- Rolling Stock Supply (Downer / Hyundai Rotem)
- Operate & Maintain (Keolis Downer)



# UrbanLeap Wider Procurement Objectives



## Local Content

- High Priority Area
- RSS 60%
- Works 84%
- 100% local steel target
- OM (FA) 93%



## Social Benefit Suppliers

- Retained community benefits within geography



## Upskilling

- More High skilled jobs for Victorians
- MPSG 15%
- MPSG 5.25% Franchise



## Social Procurement Framework

- VAB 2.5%
- SBS 2.5%
- PJS Targets
- BEP Applies



# Tunnel & Stations Access

Gamuda

# Gamuda – Civil and Building



## Stabling Yard

- Ground improvement and retention works
- Track installation
- Overhead wiring (and structures)
- Roads & Pavements
- Fencing



## Modular Buildings

- Site Facilities
- Training and Admin
- Substations
- Train Maintenance
- Operation Control Centre
- Back-Up Control Centre



## Tunnel Fit-Out

- Cable installation
- Cable containment
- MEP
- Tunnel ventilation
- Track (pre-cast slab)
- Overhead wiring (traction power)

# Core Business Globally



**55%**  
Engineering and  
Construction



**39%**  
Property  
Development



**6%**  
Infrastructure  
Concessions



**130,000+**  
Jobs Created  
to Date



**4,500+**  
Skilled Professionals  
and Tradespeople

Group Revenue (AUD)  
**\$2,998**million

Core net profit (AUD)  
**\$284**million

Core PBT (AUD)  
**\$639**million

Owners equity (AUD)  
**\$3,575**million

Average return on earnings  
over the last 5 years

**4% - 9%**

*\*Based on core PBT contribution by segment as of the 2023 financial year.*

# Gamuda's Journey in Australia



Gamuda Engineering Australia was established (2019)



Secured **3 Major Infrastructure Projects**



Sydney Metro – WTP



Coffs Harbour Bypass



M1 Raymond Terrace



Acquisition of Tunnelling Solutions (2022)

**Global Expertise, Local Delivery**

Gamuda has grown from 6 staff to **485 staff** presently. Of these, 80% are homegrown, with the rest (mainly technical experts) transferred from Malaysia.



**Acquisition of Downer Transport (2023)**

With the acquisition of DTI, Gamuda is now clearly seen as an emerging **Tier 1 player**.





# Signalling

Siemens

# Siemens Mobility Pty Ltd – Rail Systems Provider

## Rail Signalling Systems and Equipment

- Indoor/Outdoor Cabinets, Trackside equipment, Platform Screen Doors, Cables, Signals

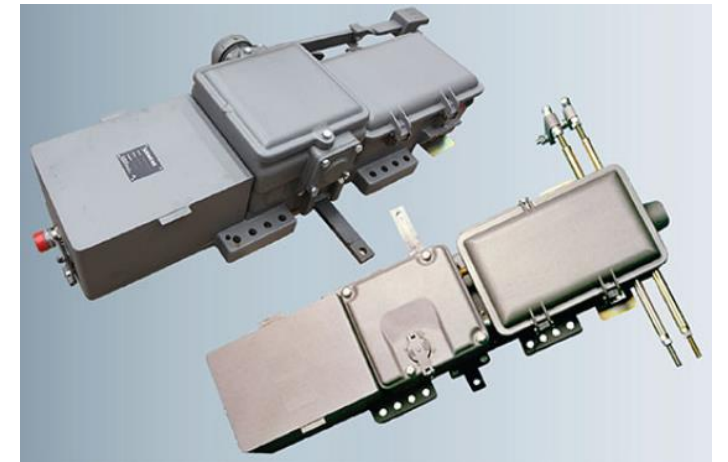
## Rail Electrification

- Cables, Steel structures, Transformers, Buildings, Switchgear, Electrification components.

## Depot Workshop Equipment

- Machining Facility equipment, Forklifts and Pallet Trucks, Painting equipment, Personnel protection systems, Lifting & access, Storage, Workshop consumables, Heavy transport trailer, Power distribution.

We're interested to hear from you!



# Rolling Stock

Downer - Hyundai Rotem

# Rolling Stock Scope Summary

## The train

- Standard gauge metro train
- 25kVA A/C overhead supply
- 13 x four-car sets

## Aims

- Maximise opportunities for the Victorian Rail Supply Chain to participate in the project
- Significant local content target with final assembly to occur in Victoria

## Timeline

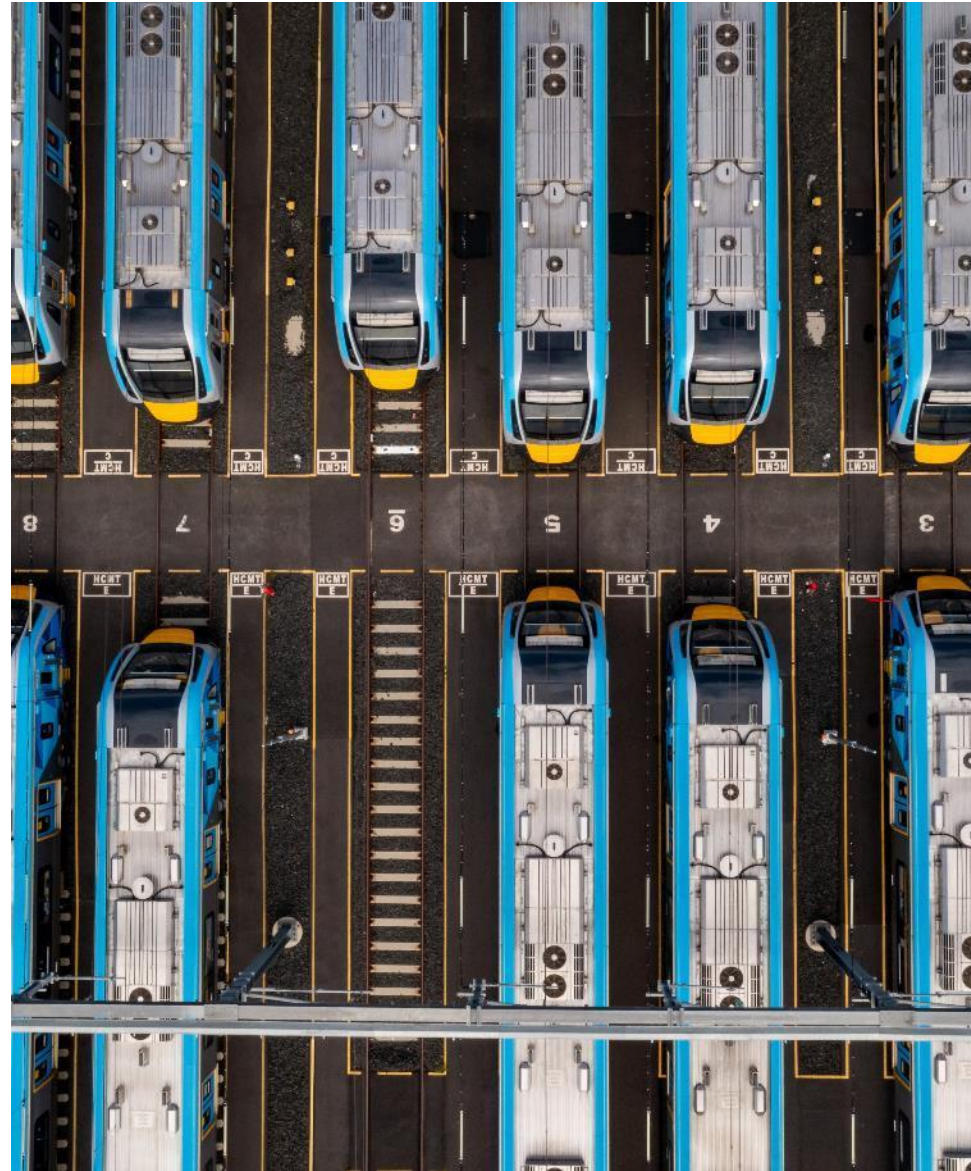
- Sub-packages in market during April 2024
- Manufacturing to commence 2029-2030
- Operations commence c.2035

# Working with Downer & Hyundai Rotem

## What we look for in suppliers

Price is important, but it is not everything. Our customers continually lift the bar in what they expect. They consider a range of factors, including:

- Safe systems of work
- Sustainability
- Workforce development targets, including diversity, apprentices
- Social procurement, including **First Nations** and **Social Enterprises**
- **Local content**
- **Supply chain development**





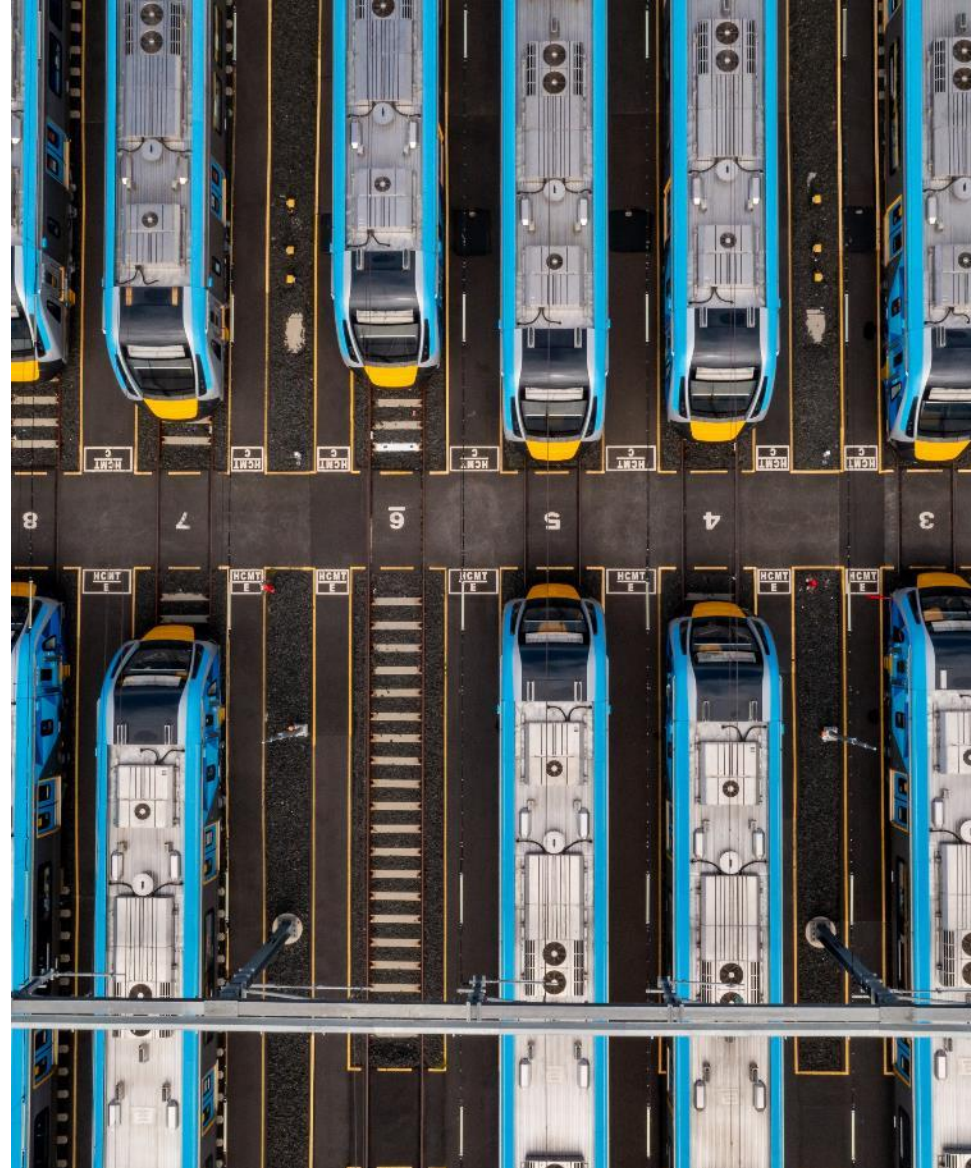
# Downer Rail & Transit Systems

Our flagship projects



# Victoria

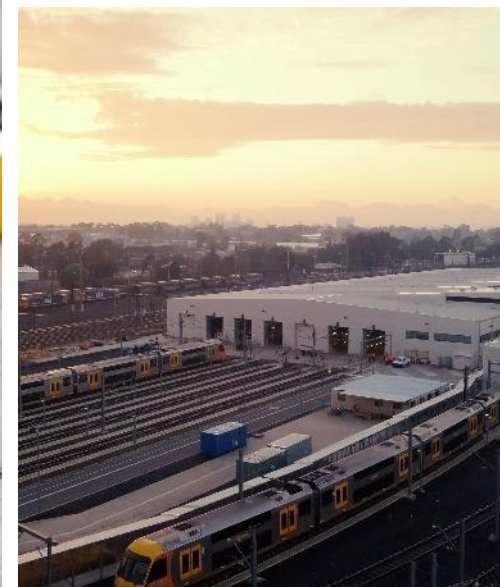
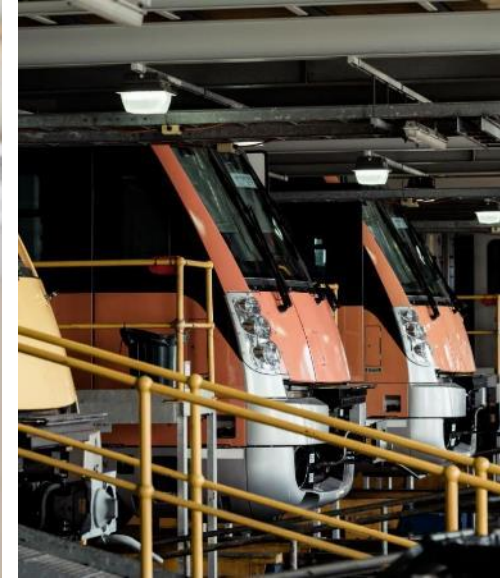
- Build and maintain 70 High-Capacity Metro Trains
- World largest tram refurbishment project with Yarra Trams franchisee Keolis Downer





# New South Wales

- Design, supply & 30-year maintenance contract for 119 Waratah trains at Auburn Maintenance Centre
- Cardiff Centre of Excellence for overhauls
- Newcastle Light Rail operator with Keolis Downer, and Downer is the fleet maintainer





# Queensland

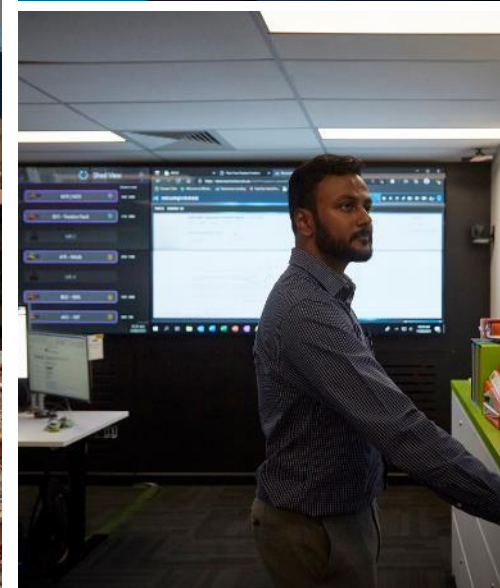
- 150-year history of operation in the Maryborough community
- Downer Hyundai Rotem JV delivering Queensland Train Manufacturing Program
- Working hand-in-hand with the customer through Rail Fusion Alliance
- Accessibility upgrades to Queensland's fleet of New Generation Rollingstock trains





# Other

- Freight and decarbonisation solutions
- TrainDNA: Our next generation asset management system and digital line of business







# How to engage with UrbanLeap

# Engaging with UrbanLeap

Register your interest and  
receive a follow up from  
UrbanLeap via our QR code.





# Questions